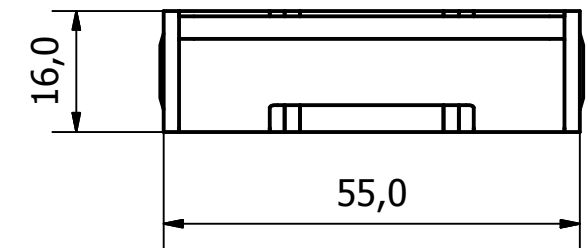
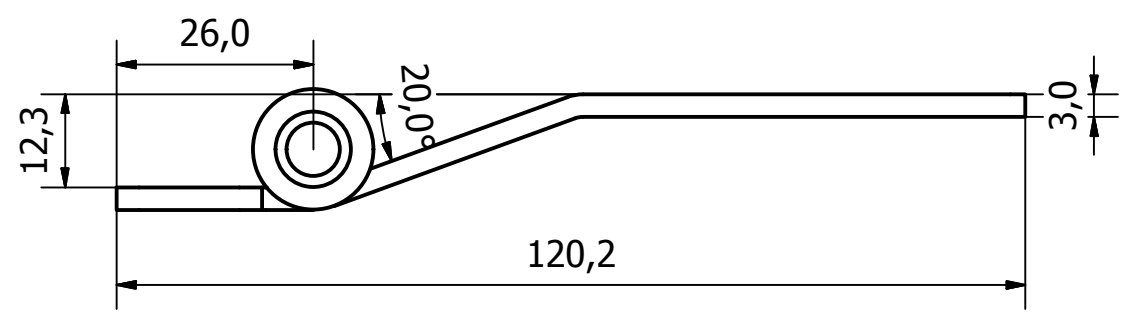
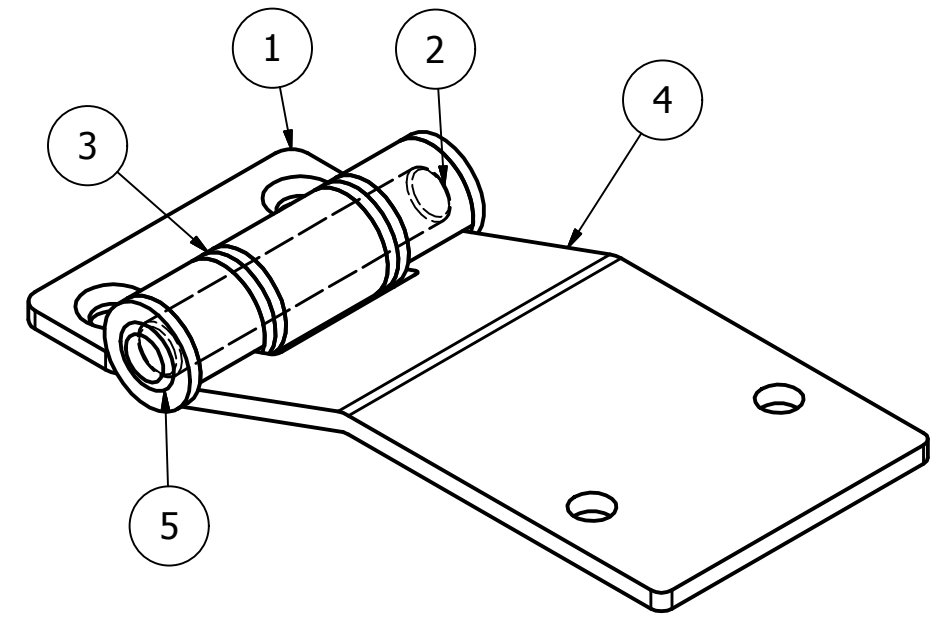
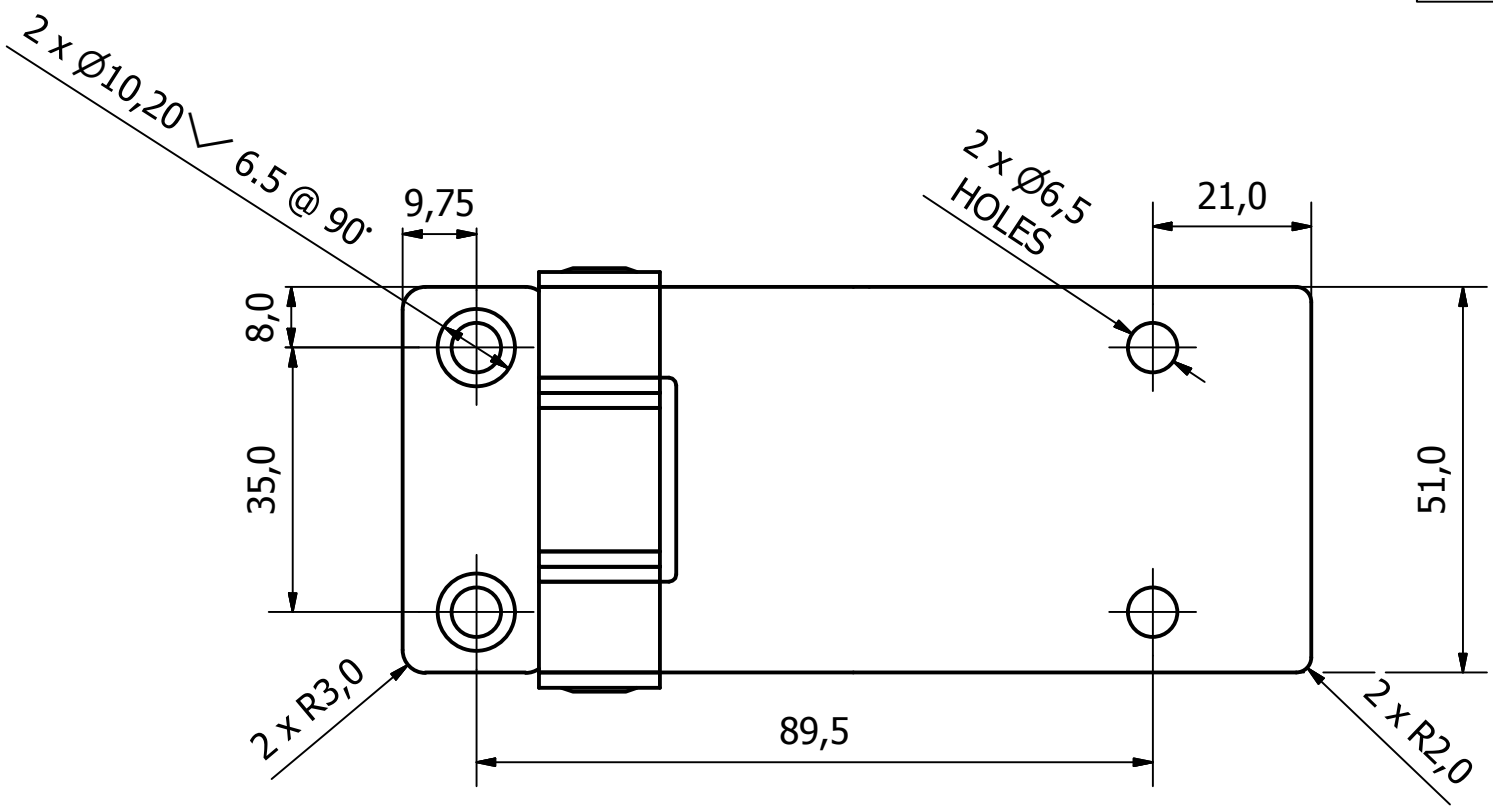


PART NUMBER	FINISH
0948-002	Z/C PASSIVATE
0948-003	P/C WHITE
0948-004	CHROME PLATED

PARTS LIST				
ITEM	QTY	PART NUMBER	DESCRIPTION	
1	1	0948-002-1	HINGE BASE PLATE - M/STEEL	
2	1	0948-002-2	SS PIN 8MM O/D - 51 O/A	
3	4	BLACK NYLON BUSH - 16 O-D	BLACK NYLON BUSH - 16 O-D	
4	1	0948-002-3	HINGE MOUNTING PLATE - M/STEEL	
5	2	DOMED BLACK NYLON BUSH - 16 O-D	DOMED BLACK NYLON BUSH - 16 O-D	



NOTE:
HINGE DESIGNED FOR 300° APPLICATIONS

GENERAL TOLERANCES ON LENGTHS
0.5 - 6 ± 0.1mm
6 - 30 ± 0.2mm
30 - 120 ± 0.3mm
120 - 400 ± 0.5mm
400 - 1000 ± 0.8mm
1000 - 1200 ± 1.2mm
2000 - 4000 ± 2.0mm

ALBERT JAGGER LTD
GREEN LANE
WALSALL PHONE: 01922 471000
WEST MIDLANDS FAX: 01922 648021
WS2 8HG

THIS DRAWING & THE DESIGN SHOWN ARE THE PROPERTY OF ALBERT JAGGER LTD AND MUST NOT BE USED OR COPIED BY A THIRD PARTY WITHOUT PERMISSION

DRAWN BY
U.F

CHECKED BY
A.P

THIRD ANGLE PROJECTION

SCALE
1 : 1

MATERIAL
-

MASS
0.188 kg

FINISH
SEE TABLE

Date
04/10/2016

ALL DIMS IN MM UNLESS STATED DO NOT SCALE

A3

1	VALIDATION COMPLETE	04/11/16	A.P
REV	DESCRIPTION	DATE	APPROVED
	CANOPY HINGE - SS PIN, CRANKED FLAP		
	0948-002	Edition 1	Sheet 1 / 1

