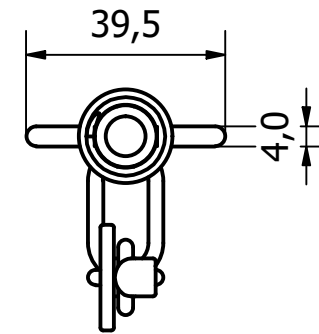
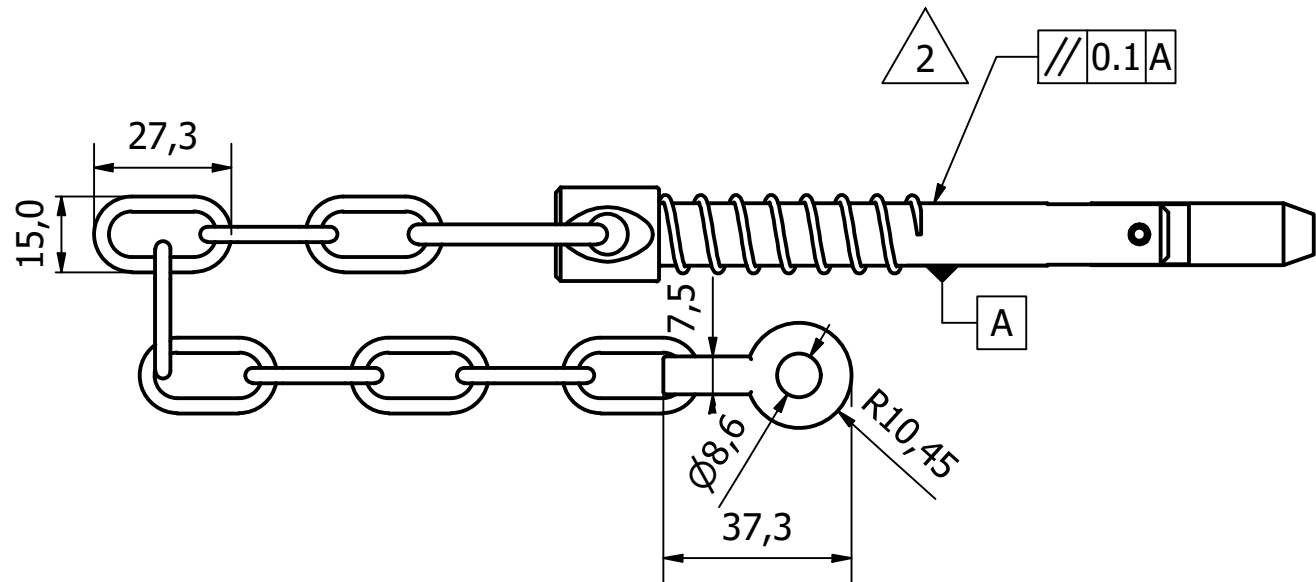
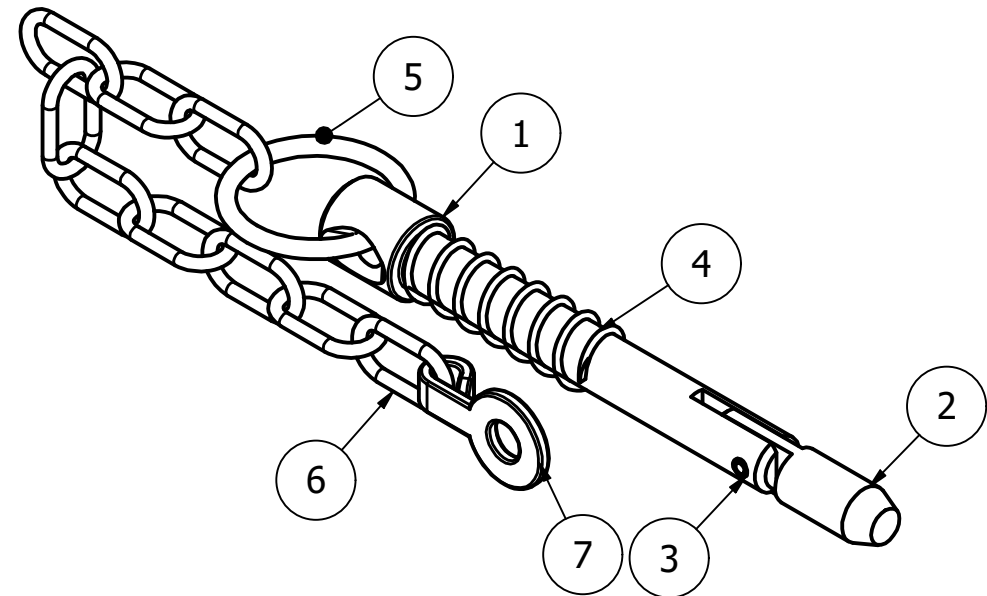
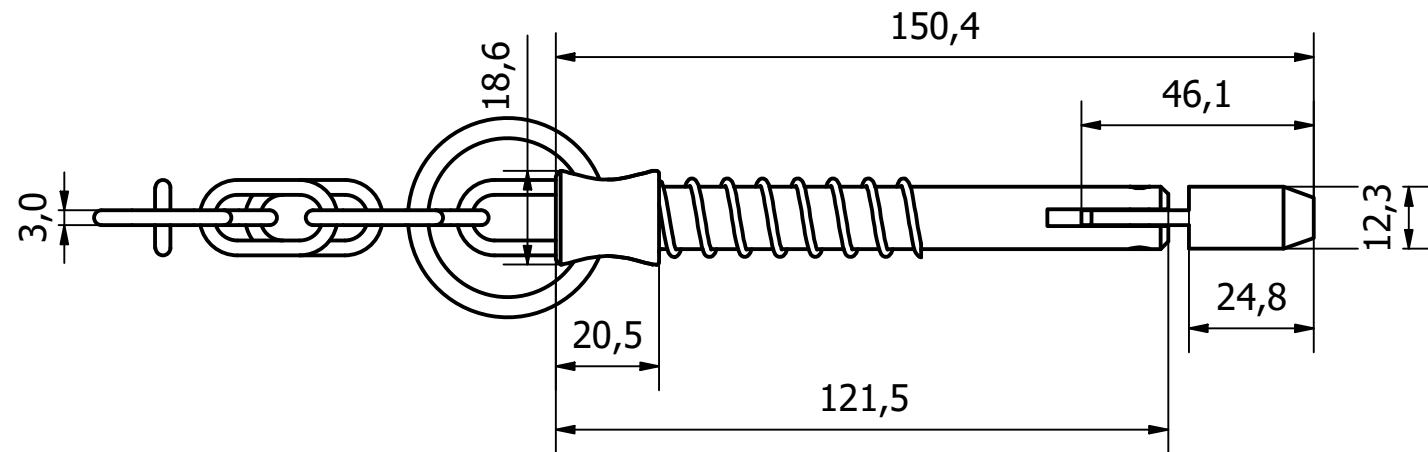
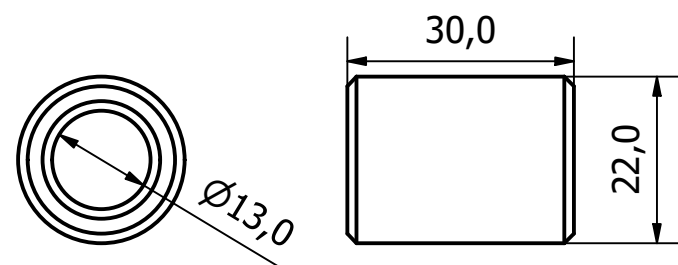


PARTS LIST			
ITEM	QTY	PART NUMBER	DESCRIPTION
1	1	1055-3080-1	M/STEEL PIN BODY - ZINC AND CLEAR PASSIVATED
2	1	1055-3080-2	S/STEEL TIP - NATURAL
3	1	1055-3080-3	M/STEEL TIP RETAINING PIN - ZINC AND CLEAR PASSIVATED
4	1	1055-3080-4	M/STEEL COIL SPRING - ZINC AND CLEAR PASSIVATED
5	1	1055-3080-5	M/STEEL CHAIN RING - ZINC AND CLEAR PASSIVATED
6	9	1055-3080-6	M/STEEL CHAIN LINK - ZINC AND CLEAR PASSIVATED
7	1	1055-3080-7	M/STEEL DARLASTON WASHER - ZINC AND CLEAR PASSIVATED



CHECKING GAUGE



GENERAL TOLERANCES ON LENGTHS
0.5 - 6 ± 0.1mm
6 - 30 ± 0.2mm
30 - 120 ± 0.3mm
120 - 400 ± 0.5mm
400 - 1000 ± 0.8mm
1000 - 2000 ± 1.2mm
2000 - 4000 ± 2.0mm

ALBERT JAGGER LTD  
GREEN LANE  
WALSALL WEST MIDLANDS WS2 8HG  
PHONE: 01922 471000  
FAX: 01922 648021

THIS DRAWING & THE DESIGN SHOWN ARE THE PROPERTY OF ALBERT JAGGER LTD AND MUST NOT BE USED OR COPIED BY A THIRD PARTY WITHOUT PERMISSION

DRAWN BY

U.F

CHECKED BY

A.P



SCALE

1:1.5

MATERIAL

SEE TABLE

MASS

0.206 kg

FINISH

SEE TABLE

Date

03/07/2017

ALL DIMS IN MM UNLESS STATED DO NOT SCALE

A3

REV	DESCRIPTION	DATE	APPROVED
1	VALIDATION COMPLETE	06/07/17	A.P
2	GEOMETRIC TOLERANCE ADDED	11/01/2022	S.R



M/STEEL SWORD PIN - 150.4 O/A

1055-3080

Edition

2

Sheet

1 / 1