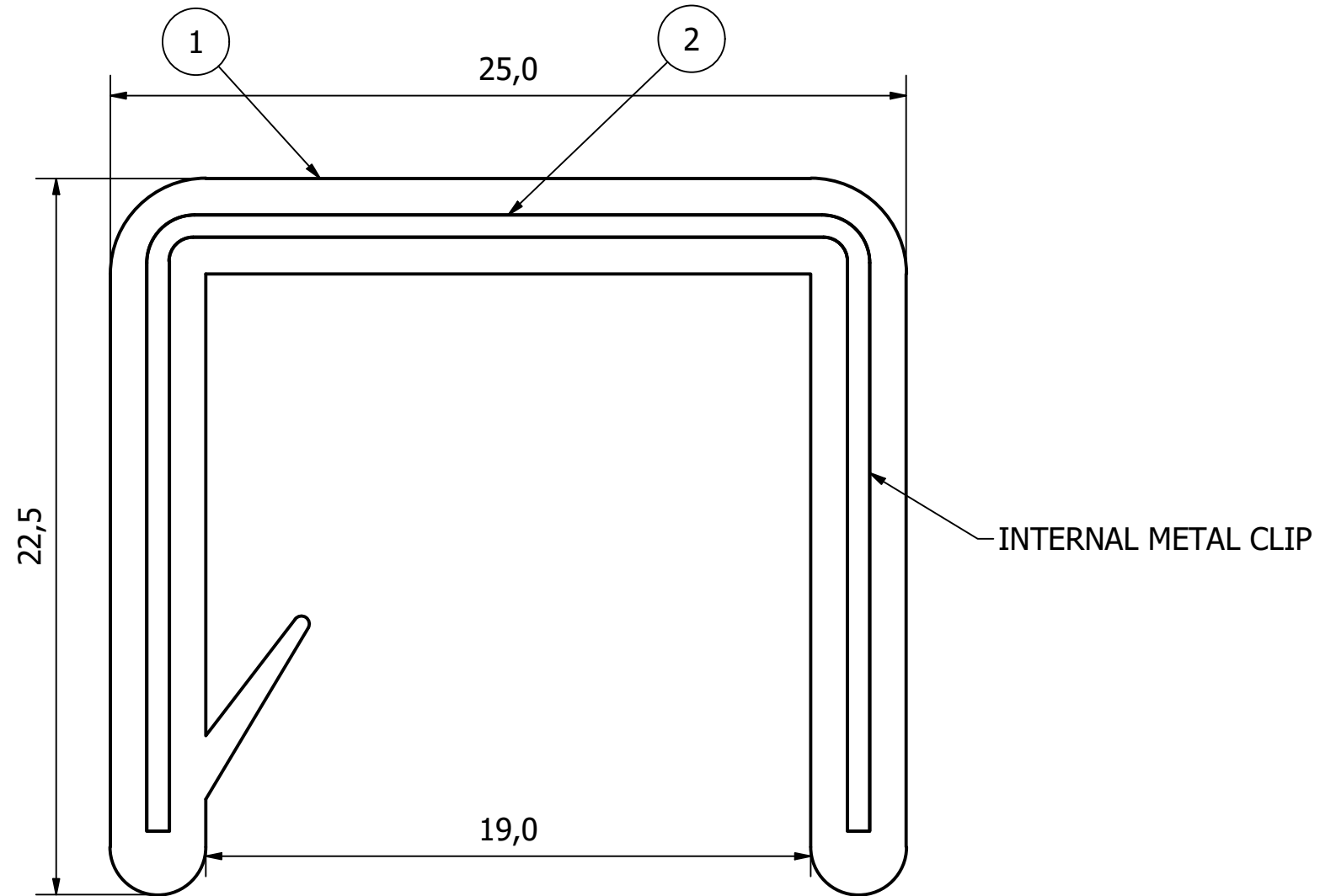


PARTS LIST			
ITEM	QTY	PART NUMBER	DESCRIPTION
1	1	5244-3000-1	BLACK PVC SEAL BODY
2	1	5244-3000-2	STEEL SPRING CORE



NOTE:

EDGE TRIM IS FLEXIBLE PVC PLASTIC TRIM WITH INDIVIDUAL INTERNAL METAL CLIPS AND GRIPPING TONGUES TO PROVIDE A STRONGER GRIP.

GRIP RANGE = 17mm

76m COIL

REV	DESCRIPTION	DATE	APPROVED
1	VALIDATION COMPLETE	22/05/19	A.P

DRAWN BY A.S	CHECKED BY A.P	SCALE 5:1	MATERIAL SEE DRAWING	MASS 0.017 kg	FINISH SEE DRAWING	Date 17/04/2019	ALL DIMS IN MM UNLESS STATED DO NOT SCALE	A3
							EDGE TRIM 19mm GRIP	
5244-3000							Edition 1	Sheet 1 / 1

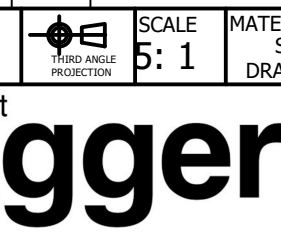
GENERAL TOLERANCES ON LENGTHS
0.5 - 6 ± 0.1mm
6 - 30 ± 0.2mm
30 - 120 ± 0.3mm
120 - 400 ± 0.5mm
400 - 1000 ± 0.8mm
1000 - 2000 ± 1.2mm
2000 - 4000 ± 2.0mm

ALBERT JAGGER LTD  
GREEN LANE  
WALSALL PHONE: 01922 471000  
WEST MIDLANDS FAX: 01922 648021  
WS2 8HG

THIS DRAWING & THE DESIGN SHOWN ARE THE PROPERTY OF ALBERT JAGGER LTD AND MUST NOT BE USED OR COPIED BY A THIRD PARTY WITHOUT PERMISSION

DRAWN BY  
A.S

CHECKED BY  
A.P



SCALE  
5:1

MATERIAL  
SEE DRAWING

MASS  
0.017 kg

FINISH  
SEE DRAWING

Date  
17/04/2019

ALL DIMS IN MM  
UNLESS STATED  
DO NOT SCALE

A3