

A IF IN DOUBT ASK

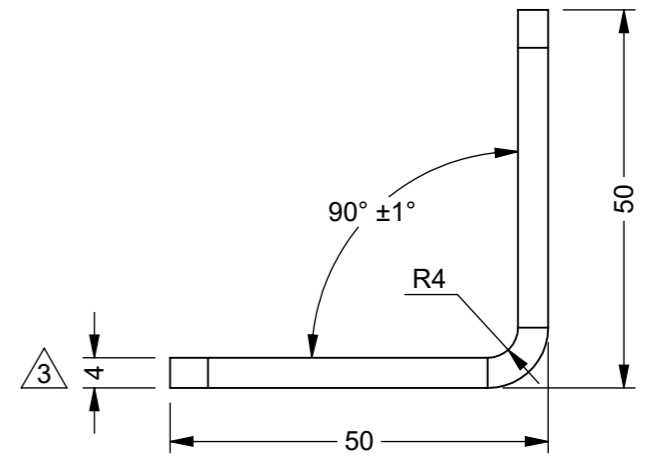
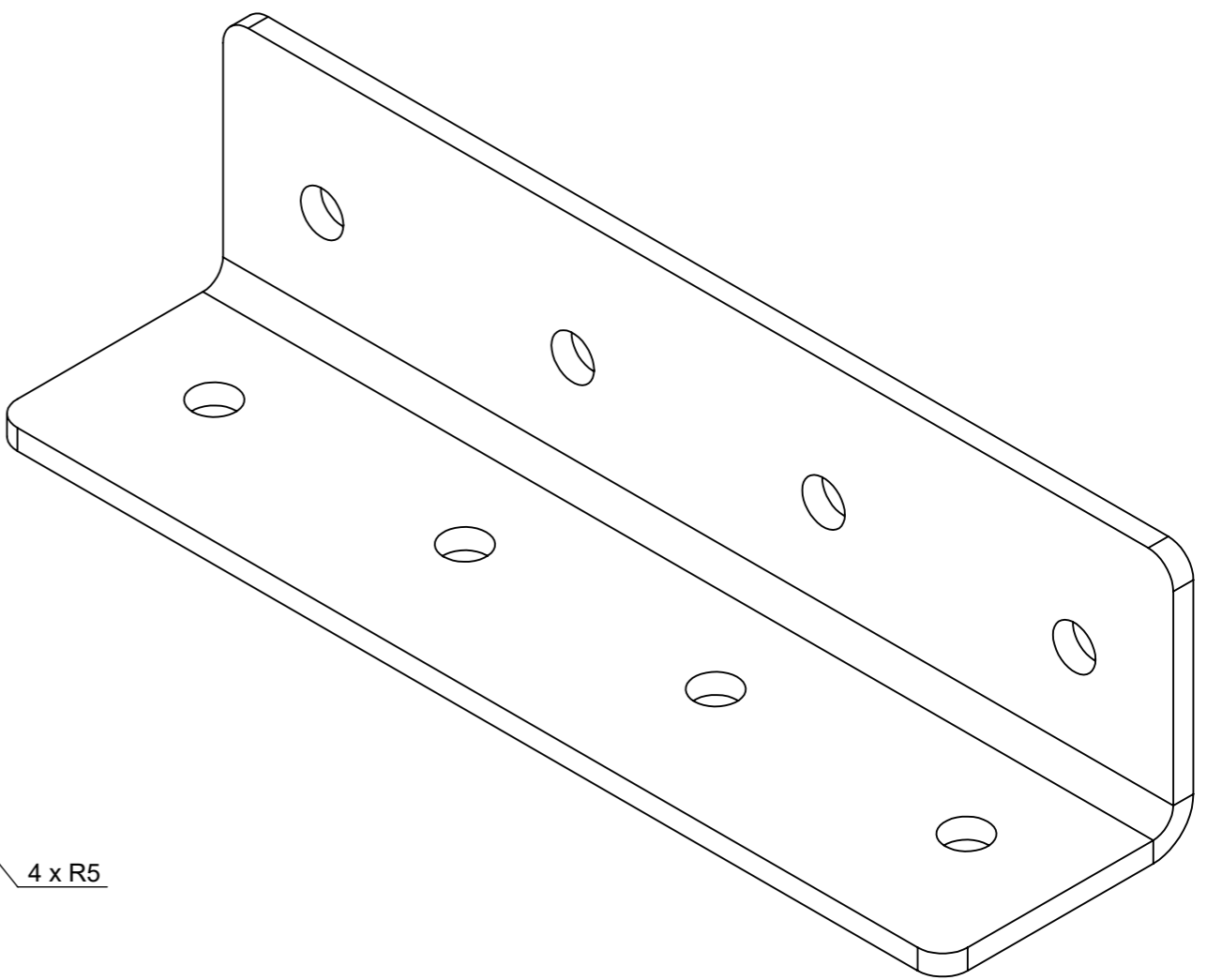
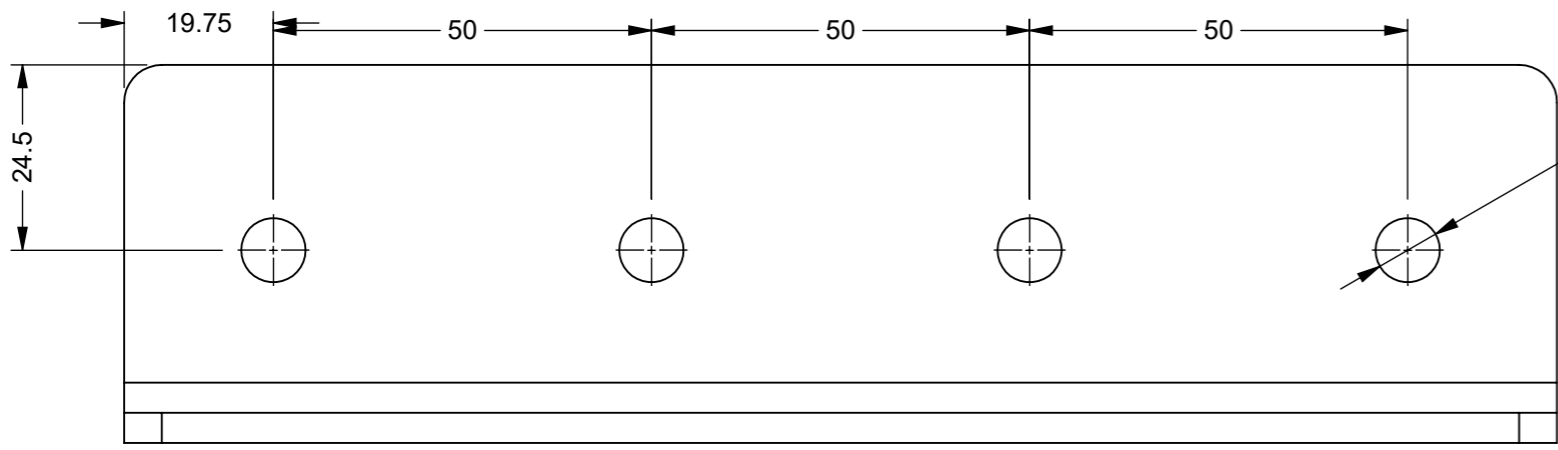
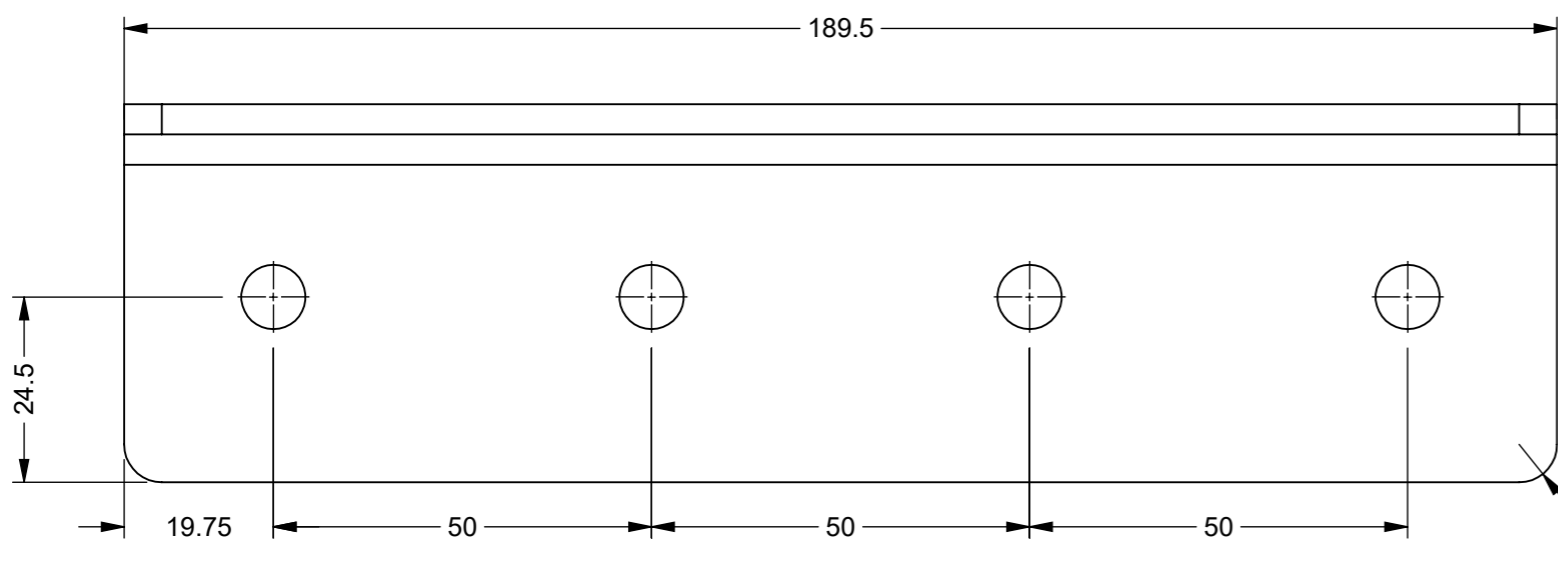
B

C

D

E

F



ZONE	REV.	DESCRIPTION	DATE	APPROVED
E3	3	DESIGN MODIFIED - BRACKET NOW FOLDED RATHER THAN EXTRUSION , 4MM THICK	14/11/2023	U.F

REVISIONS

UNLESS OTHERWISE STATED, ALL DIMENSIONS IN mm

TOLERANCES	SURFACE FINISH
0.5 - 6 = ±0.1mm	1.6µm Ra
6 - 30 = ±0.2 mm	FILLET RADII 0.5 TO 1.0
30 - 120 = ±0.3 mm	SQUARENESS 0.05 IN 25
120 - 400 = ±0.5 mm	PARALLELISM 0.05 IN 25
400 - 1000 = ±0.8 mm	RUNOUT 0.1
1000 - 2000 = ±1.2 mm	ANGLES ±0.5°
2000 - 4000 = ±2.0 mm	

MATERIAL: M/STEEL - CR4	DRAWN BY: UF	DESCRIPTION: FOLDED BODY MOUNTING BRACKET 189.5 x 50			A3
MASS: 0.54	CHECKED BY: C.H	NUMBER: 6033-5050	REVISION: 3	SHEET: 1 of 2	
FINISH: ZINC PLATED - 8 MICRONS WITH CLEAR JS500 TOP COAT	APPROVED BY: C.H				

PROPRIETARY RIGHTS ARE INCLUDED IN THE INFORMATION DISCLOSED HEREIN. NEITHER THIS DOCUMENT NOR ANY INFORMATION DISCLOSED SHALL BE REPRODUCED, USED, TRANSFERRED TO OTHER DOCUMENTS, OR DISCLOSED TO OTHERS FOR ANY PURPOSE INCLUDING MANUFACTURING UNLESS SPECIFICALLY AUTHORISED IN WRITING REMOVE ALL SHARP EDGES AND BURRS PART FINISHING AND MARKING TO CESF001



ORIGINATION DATE: 14/11/2023	SCALE : PROPORTIONAL - DO NOT SCALE REF SCALE 1:1 WHEN PRINTED ON A3	PROJECTION 3rd ANGLE
------------------------------	--	----------------------

8 7 6 5 4 3 2 1 IF IN DOUBT ASK

A IF IN DOUBT ASK

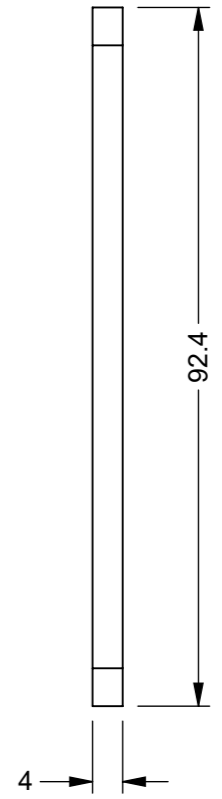
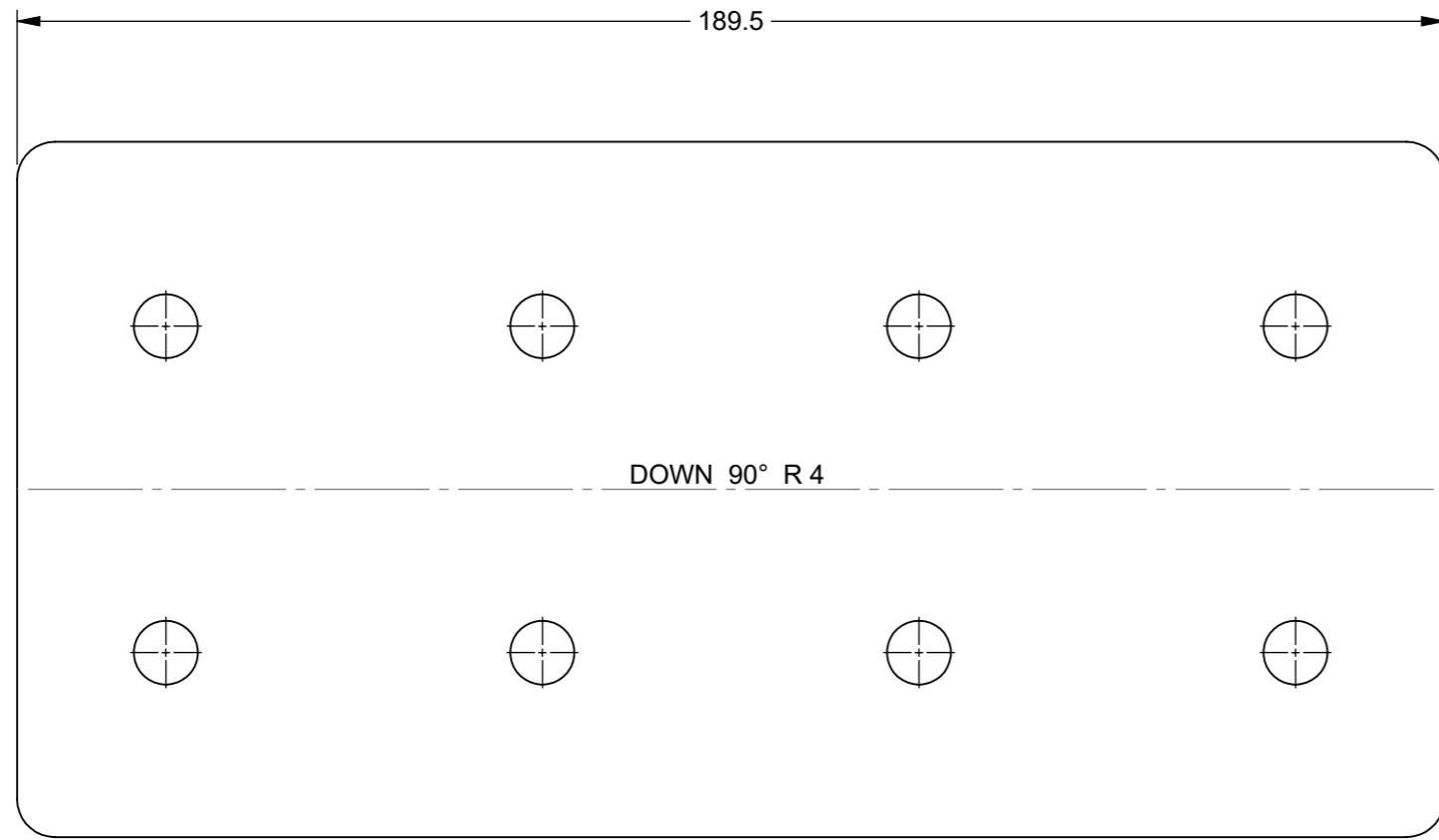
B

C

D

E

F



ZONE	REV.	DESCRIPTION	DATE	APPROVED
1-E3	3	DESIGN MODIFIED - BRACKET NOW FOLDED RATHER THAN EXTRUSION , 4MM THICK	14/11/2023	U.F

REVISIONS

UNLESS OTHERWISE STATED, ALL DIMENSIONS IN mm

TOLERANCES		SURFACE FINISH 1.6um Ra	
0.5 - 6	= ±0.1mm	FILLET RADII	0.5 TO 1.0
6 - 30	= ±0.2 mm	SQUARENESS	0.05 IN 25
30 - 120	= ±0.3 mm	PARALLELISM	0.05 IN 25
120 - 400	= ±0.5 mm	RUNOUT	0.1
400 - 1000	= ±0.8 mm	ANGLES	±0.5°
1000 - 2000	= ±1.2 mm		
2000 - 4000	= ±2.0 mm		

MATERIAL: M/STEEL - CR4
 MASS: 0.53
 FINISH: NATURAL

DRAWN BY: UF
 CHECKED BY: C.H
 DESCRIPTION: FOLDED BODY MOUNTING BRACKET 189.5 x 90

A3

PROPRIETARY RIGHTS ARE INCLUDED IN THE INFORMATION DISCLOSED HEREIN. NEITHER THIS DOCUMENT NOR ANY INFORMATION DISCLOSED SHALL BE REPRODUCED, USED, TRANSFERRED TO OTHER DOCUMENTS, OR DISCLOSED TO OTHERS FOR ANY PURPOSE INCLUDING MANUFACTURING UNLESS SPECIFICALLY AUTHORISED IN WRITING
 REMOVE ALL SHARP EDGES AND BURRS
 PART FINISHING AND MARKING TO CESF001



APPROVED BY: C.H
 ORIGINATION DATE: 14/11/2023
 NUMBER: 6033-5050
 REVISION: 3
 SHEET: 2 of 2
 SCALE : PROPORTIONAL - DO NOT SCALE
 REF SCALE 1:2 WHEN PRINTED ON A3



8 7 6 5 4 3 2 1