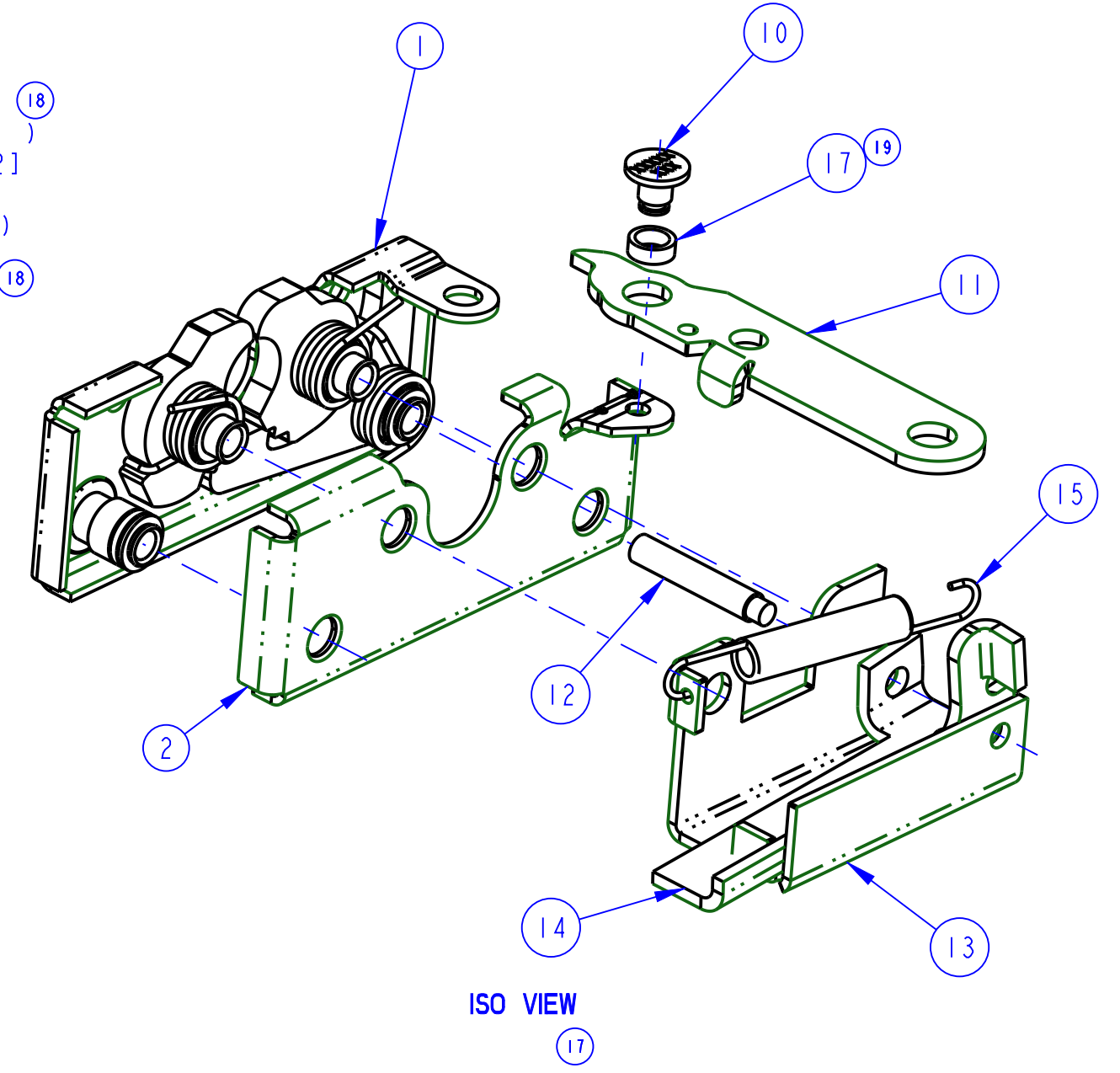
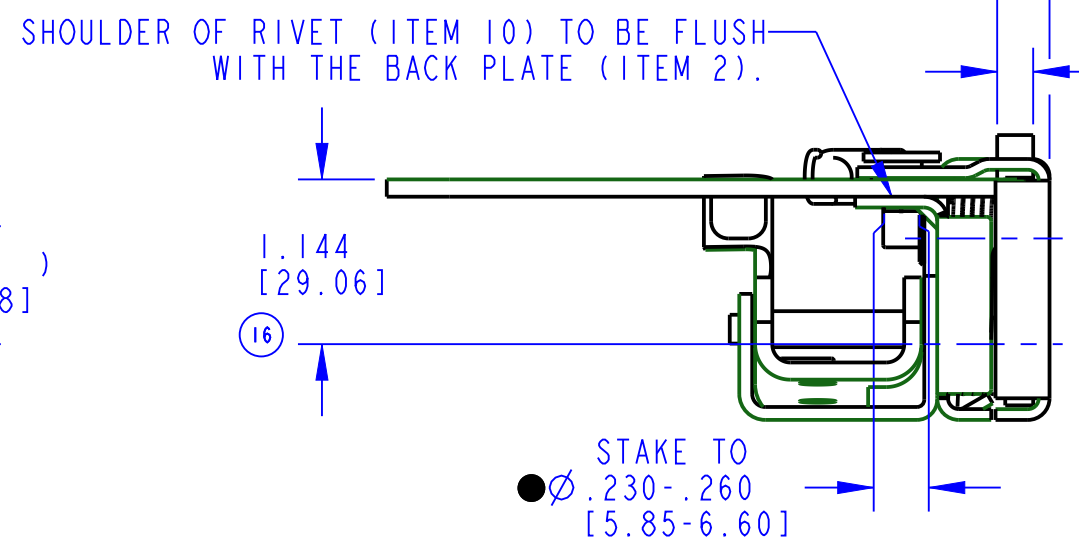
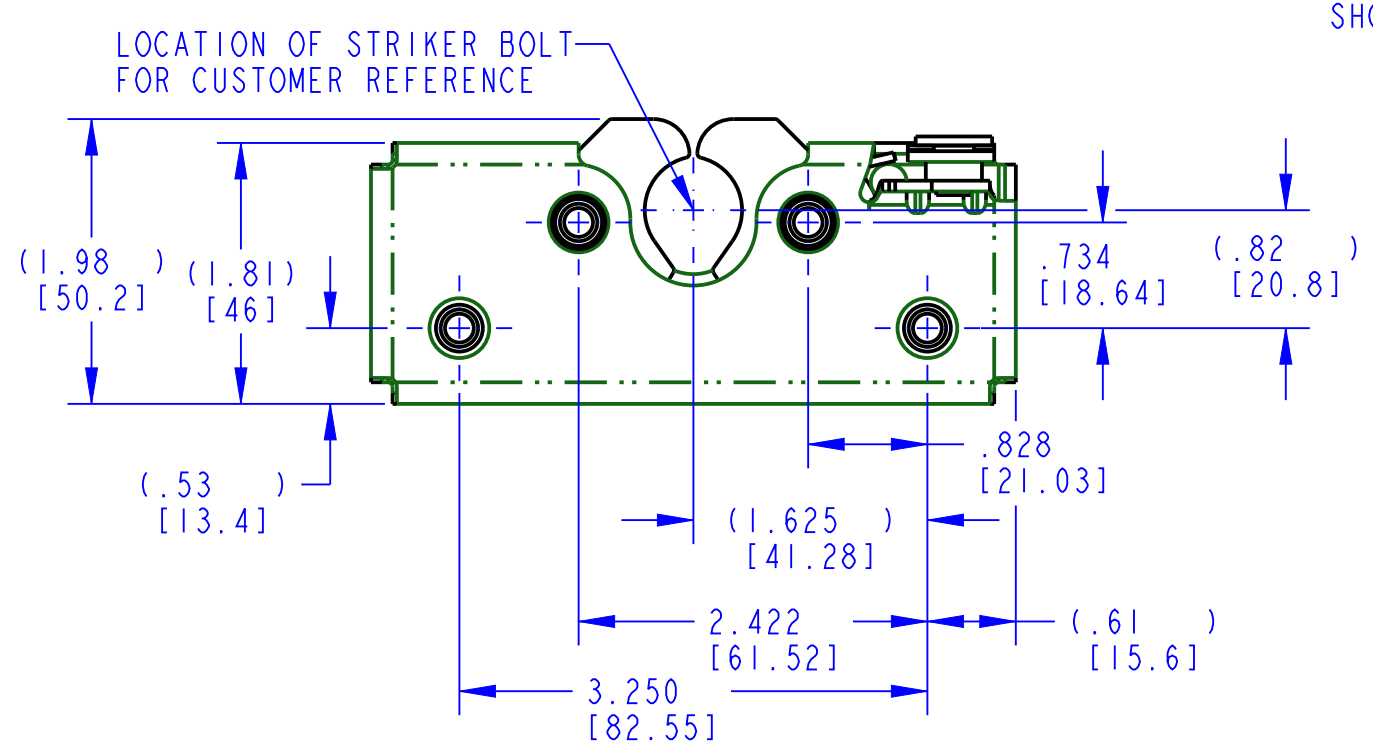
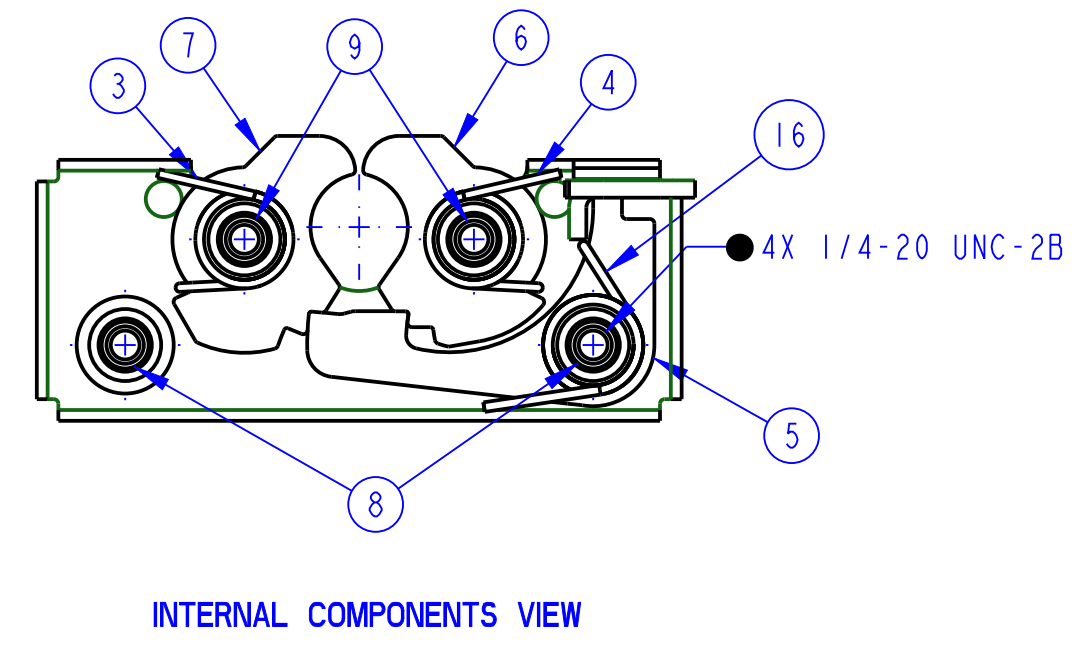
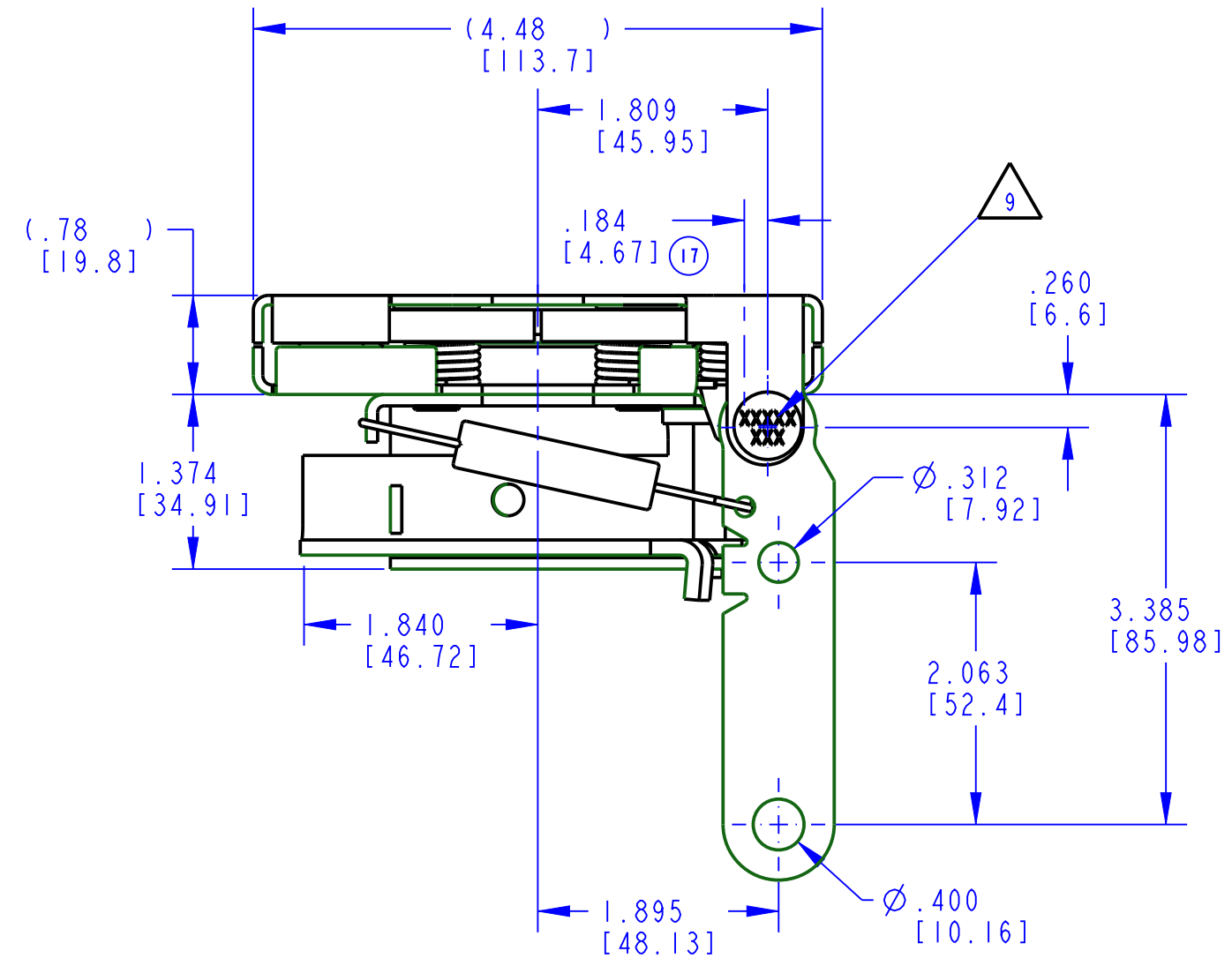


PART NUMBER DESCRIPTION	ITEM 1 PLATE (QTY)	ITEM 2 PLATE (QTY)	ITEM 3 SPRING (QTY)	ITEM 4 SPRING (QTY)	ITEM 5 CATCH (QTY)	ITEM 6 ROTOR (QTY)	ITEM 7 ROTOR (QTY)	ITEM 8 AXLE (QTY)	ITEM 9 AXLE (QTY)	ITEM 10 RIVET (QTY)	ITEM 11 LEVER (QTY)	ITEM 12 PIN (QTY)	ITEM 13 BRACKET (QTY)	ITEM 14 BELLCRANK (QTY)	ITEM 15 SPRING (QTY)	ITEM 16 SPRING (QTY)	ITEM 17 BUSHING (QTY)	17 PART MARKING
11472-16 050-0170,RH,2POSN,1/4-20 STRDLMT,BELCRK	12116-16 (1)	11387-16 (1)	80853-00 (1)	80854-00 (1)	80631-26 (1)	81051-26 (1)	81052-26 (1)	81053-16 (2)	81055-16 (2)	81656-16 (1)	14170-01 (1)	11220-16 (1)	80917-16 (1)	80918-16 (1)	80926-57 (1)	19428-01 (1)	26580-01 (1)	11472

REVISION	ECN	ECN BY	DESCRIPTION
16	21574	GDE 02/12/08	80854-00 (QTY 1) WAS (QTY 2). ADDED: 19428-01 (ITEM 16). I.154 WAS I.175. HEX/TRIVALENT UPDATES. UPDATED: FORMAT,NOTES.
17	36680	AGG 11/09/11	ADDED: NOTE 8,9; ISO VIEW. UPDATED: NOTE 1,6;DESC;CR/PR DIMS; PART MARKING.
18	38835	AGJ 01/09/15	UPDATED:FORMAT (C WAS D), SCALE (.75 WAS 1.0), CR/PR DIMS,IMAGE OF ITEM 12 (11220-16). ADDED:NOTE 10.
19	38905	AGJ 02/19/15	UPDATED:IMAGE OF ITEM 11 (14170-01),ISO VIEW. ADDED:ITEM 17 (26580-01).



LEVER (ITEM 11),PIN (ITEM 12),BRACKET (ITEM 13), BELLCRANK (ITEM 14), AND SPRING (ITEM 15) NOT SHOWN FOR CLARITY

- NOTES: UNLESS OTHERWISE SPECIFIED;
- ASSEMBLY COMPLIES WITH STRENGTH REQUIREMENTS OF SAE STANDARD J839.
 - USE WITH TRI/MARK'S $\varnothing .675$ [17.15] LATCH BOLT.
 - STAKE ITEM 8 TO HOLD LATCH ASSEMBLY TOGETHER. ASSEMBLE ITEM 13 TO ITEM 14 WITH ITEM 12 THEN STAKE TO ITEM 9.
 - IDENTIFY ASSEMBLIES WITH PART NUMBER AND DATE CODE, APPROXIMATELY AS SHOWN OR IN OTHER APPROVED LOCATIONS AS OUTLINED IN ES-121. ORIENTATION OF RIVET CONTAINING PART NUMBER AND DATE CODE NOT IMPORTANT.
 - DIMENSIONS IN [] ARE MILLIMETERS FOR REFERENCE ONLY.
 - AXLES TO WITHSTAND A MINIMUM OF 120 IN-LB [13.6 Nm] OF TORQUE.
 - WHEN MOUNTING LATCH, MOUNTING HOLE SIZE NOT TO EXCEED $\varnothing .312$ [7.92].
 - TIGHTEN GRADE 5 OR BETTER MOUNTING FASTENERS TO THE FASTENER MANUFACTURER'S RECOMMENDED TORQUE VALUE; HOWEVER, DO NOT EXCEED 120 IN-LB [13.6 Nm].
 - ROTORS TO FULLY ENGAGE THE CATCH IN THE PRIMARY AND SECONDARY POSITIONS WHEN CLOSED WITH A $\varnothing .678$ [17.22] GAUGE PIN.
 - OPPOSITE HAND ITEM IS 11473-16.

<p>INDICATES REQUIRED ASSEMBLY INFORMATION. UOS: THE -00 VERSION SHALL BE THE UNFINISHED VERSION OF PART SHOWN. UOS: ALL DIMENSIONS APPLY BEFORE COATING. (ASME Y14.5M, sec. 2.4.1)</p>		<p>TriMark 500 Bailey Avenue P. O. Box 350 New Hampton, Iowa 50659 U.S.A. Tel: 641-394-3188 Fax: 641-394-2392</p>	
<p>TOLERANCES UNLESS OTHERWISE SPECIFIED (UOS) ASME Y14.5M-1994</p>		<p>DRAWN BY: KPE 8/7/87</p>	<p>PROJECT: L860057-34</p>
<p>DO NOT SCALE DRAWING</p>		<p>CHECKED BY: BAB</p>	<p>PRODUCT CODE: E13 (050-0170)</p>
<p>REF. T/M OP 4.20-2 FOR SUP. QUALITY REQ. REF. T/M OP 4.20-3 FOR INT. QUALITY REQ.</p>		<p>CUSTOMER PART NUMBER</p>	<p>DESCRIPTION: SEE BOM</p>
<p>PART WEIGHT: (1.29 LB)</p>		<p>SURFACE AREA</p>	<p>SIZE: C SCALE: 0.75 PART NUMBER: 11472</p>