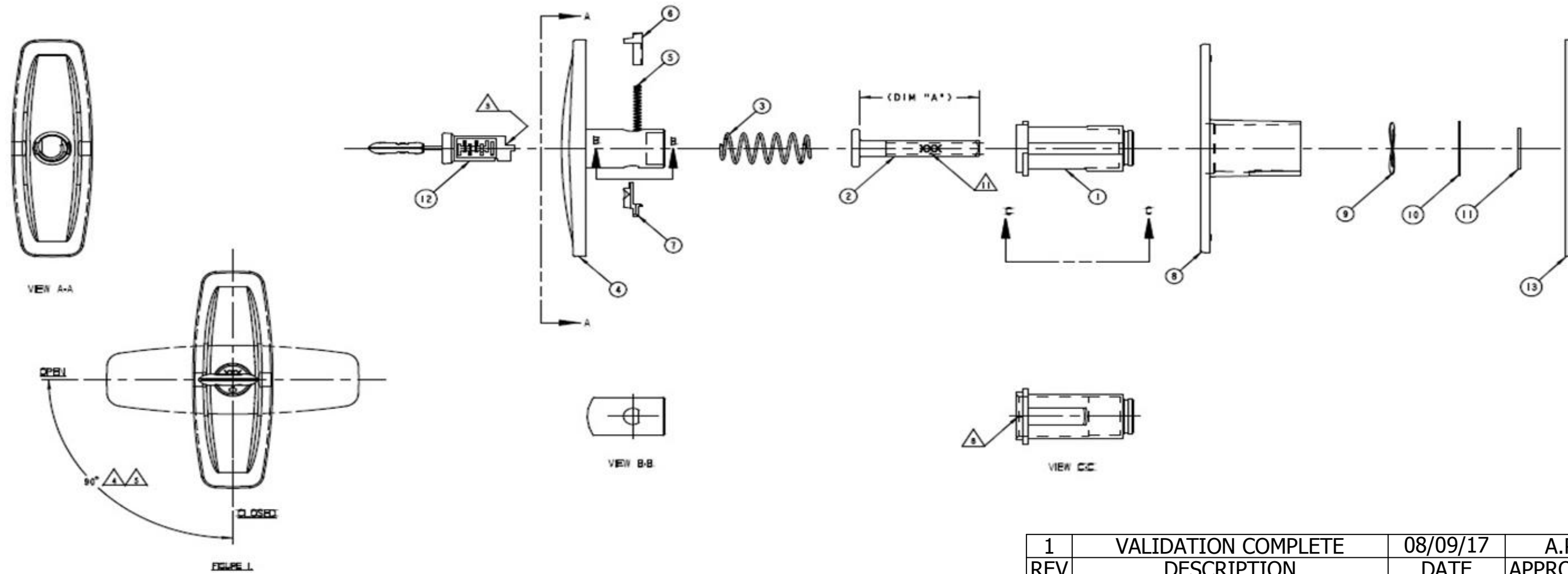


PART NUMBER DESCRIPTION	ITEM 1 RETAINER (QTY)	ITEM 2 BAR (QTY)	ITEM 3 SPRING (QTY)	ITEM 4 HANDLE (QTY)	ITEM 5 PIN (QTY)	ITEM 6 PIN (QTY)	ITEM 7 PIN (QTY)	ITEM 8 BASE (QTY)	ITEM 9 WASHER (QTY)	ITEM 10 WASHER (QTY)	ITEM 11 PIN (QTY)	ITEM 12 LOCKCYLINDER (QTY)	ITEM 13 GASKET (QTY)	FINISH	DATE CODE YES/NO	DIM 'A'
11738-02 010-0600, PNH, TMS11, RH, 2.5, 90DEG		80955-14 (1)		11932-37 (1)				12211-02 (1)				14000-03 (1) [TMS11]		PAINT, PURE WHITE PER SPRAYLAT PRPL 99010	YES	2.019
11738-03 010-0600, LGB, TMS01-950, RH, 2.5, 90DEG		81637-14 (1)										14000-05 (1) [TMS01-TMS50]			NO	1.020
11738-04 010-0600, LGB, TMS11, RH, 2.5, 90DEG	12192-06 (1)	81620-14 (1)	80956-90 (1)									14000-03 (1) [TMS11]	80981-00 (1)		NO	2.019
11738-05 010-0600, LGB, TMS01-950, RH, 2.5, 90DEG		80955-14 (1)		11932-37 (1)				12211-07 (1)	80958-18 (1)	81218-16 (1)	81225-39 (1)	14000-05 (1) [TMS01-TMS50]		PAINT, BLACK, LOW GLOSS	YES	1.020
11738-06 010-0600, LGB, TMS11, RH, 2.5, 90DEG		81637-14 (1)										14000-03 (1) [TMS11]			NO	2.019
11738-07 010-0600, LGB, CHS45S, RH, 2.5, 90DEG		80955-14 (1)										14000-01 (1) [CHS45S]			NO	2.019
11738-08 010-0600, LGB, TMS01-950, RH, 2.5, 90DEG, 3 KA/BAG	12192-06 (3)	80955-14 (3)	80956-90 (3)	11932-37 (3)	80957-00 (3)	11207-09 (3)	12499-09 (3)	12211-07 (3)	80958-18 (3)	81218-16 (3)	81225-39 (3)	14000-02 (3) [TMS01-TMS50]	80981-00 (3)		NO	1.020
11738-10 010-0600, LGB, TMS01-950, RH, 2.5, 90DEG	12192-06 (1)	81620-14 (1)	80956-90 (1)	11932-37 (1)	80957-00 (1)	11207-09 (1)	12499-09 (1)	12211-07 (1)	80958-18 (1)	81218-16 (1)	81225-39 (1)	14000-05 (1) [TMS01-TMS50]	80981-00 (1)		NO	2.019
11738-11 010-0600, SEN, TMS11, RH, 2.5, 90DEG		80955-14 (1)		11932-34 (1)				12211-04 (1)				14000-03 (1) [TMS11]		PAINT, SKY WHITE PER TGIC-POLYESTER	YES	2.019
11738-12 010-0600, LGB, TMS01-950, RH, 2.5, 90DEG, 2 KA/BAG	12192-06 (2)	81620-14 (2)	80956-90 (2)	11932-37 (2)	80957-00 (2)	11207-09 (2)	12499-09 (2)	12211-07 (2)	80958-18 (2)	81218-16 (2)	81225-39 (2)	14000-02 (2) [TMS01-TMS50]	80981-00 (2)		NO	1.020
11738-14 010-0600, LGB, TMS01-TMS10, RH, 2.5, 90DEG	12192-06 (1)	81620-14 (1)	80956-90 (1)	11932-37 (1)	80957-00 (1)	11207-09 (1)	12499-09 (1)	12211-07 (1)	80958-18 (1)	81218-16 (1)	81225-39 (1)	14000-08 (1) [TMS01-TMS10]	80981-00 (1)		NO	2.019
11738-37 010-0600, LGB, TMS11, RH, 2.5, 90DEG		80955-14 (1)						12211-07 (1)	80958-18 (1)	81218-16 (1)	81225-39 (1)	14000-03 (1) [TMS11]			YES	2.019

- NOTES: UNLESS OTHERWISE SPECIFIED:
- ALL COMPONENTS TO BE ASSEMBLED AS SHOWN IN NUMERICAL ORDER.
 - SPRING (ITEM 5), PIN (ITEM 6), AND PIN (ITEM 7) TO BE INSTALLED IN HANDLE (ITEM 4) AFTER HANDLE IS INSERTED INTO RETAINER (ITEM 1).
 - ALPHA 2000 GREASE TO BE LIBERALLY APPLIED TO END OF LOCKCYLINDER (ITEM 12) BEFORE INSTALLATION.
 - ROTATION OF HANDLE (ITEM 4) TO THE FULLY OPENED POSITION AS IN FIGURE 1 IS CLOCKWISE FOR A RH ASSEMBLY.
 - ROTATION OF HANDLE (ITEM 4) TO THE FULLY CLOSED POSITION AS IN FIGURE 1 IS COUNTERCLOCKWISE FOR A RH ASSEMBLY.
 - ROTATION OF BAR (ITEM 2) SHOULD NOT RELEASE THE HANDLE (ITEM 4) FROM THE DEPRESSED TO THE RELEASED POSITION.
 - GASKET (ITEM 13) TO BE PLACED OVER BAR (ITEM 2).
 - RAISED MARK ON RETAINER (ITEM 1) INDICATES SIDE WHICH THE PIN (ITEM 7) PROTRUDES THROUGH THE RETAINER.
 - FINISH FOR REFERENCE ONLY.
 - KEYRING TO BE PLACED OVER BAR (ITEM 2) BEFORE BAGGING. SEAL BAG SO THAT KEYS STAY ON BAR.
 - STAMP DATE CODE PER ES-121 (IF REQUIRED) PRIOR TO ASSEMBLY (SEE TABLE). LOCATE APPROXIMATELY AS SHOWN.
 - FOR 11738-09 ONLY, THREE T-HANDLES PER BAG, KEYED ALIKE, AND SEALED IN THREE SEPARATE COMPARTMENTS WITH TWO KEYS.
 - FOR 11738-12 ONLY, TWO T-HANDLES PER BAG, KEYED ALIKE, AND SEALED IN THREE SEPARATE COMPARTMENTS WITH TWO KEYS.



NOTE:
DIM 'A' LISTED IN INCHES

GENERAL TOLERANCES ON LENGTHS

0.5 - 6 ± 0.1mm
6 - 30 ± 0.2mm
30 - 120 ± 0.3mm
120 - 400 ± 0.5mm
400 - 1000 ± 0.8mm
1000 - 2000 ± 1.2mm
2000 - 4000 ± 2.0mm

ALBERT JAGGER LTD
GREEN LANE
WALSALL
WEST MIDLANDS
WS2 8HG

PHONE: 01922 471000
FAX: 01922 648021

THIS DRAWING & THE DESIGN SHOWN ARE THE PROPERTY OF ALBERT JAGGER LTD AND MUST NOT BE USED OR COPIED BY A THIRD PARTY WITHOUT PERMISSION

DRAWN BY
U.F

CHECKED BY
A.P

THIRD ANGLE PROJECTION

SCALE
-

MATERIAL
-

MASS
-

FINISH
P/C
BLACK

Date
08/09/2017

ALL DIMS IN MM UNLESS STATED DO NOT SCALE

A3



FLUSH MOUNTED POP UP TEE HANDLE - 010-0600 SERIES
9500-11738-37

Edition 1	Sheet 1 / 1
--------------	----------------

1	VALIDATION COMPLETE	08/09/17	A.P
REV	DESCRIPTION	DATE	APPROVED