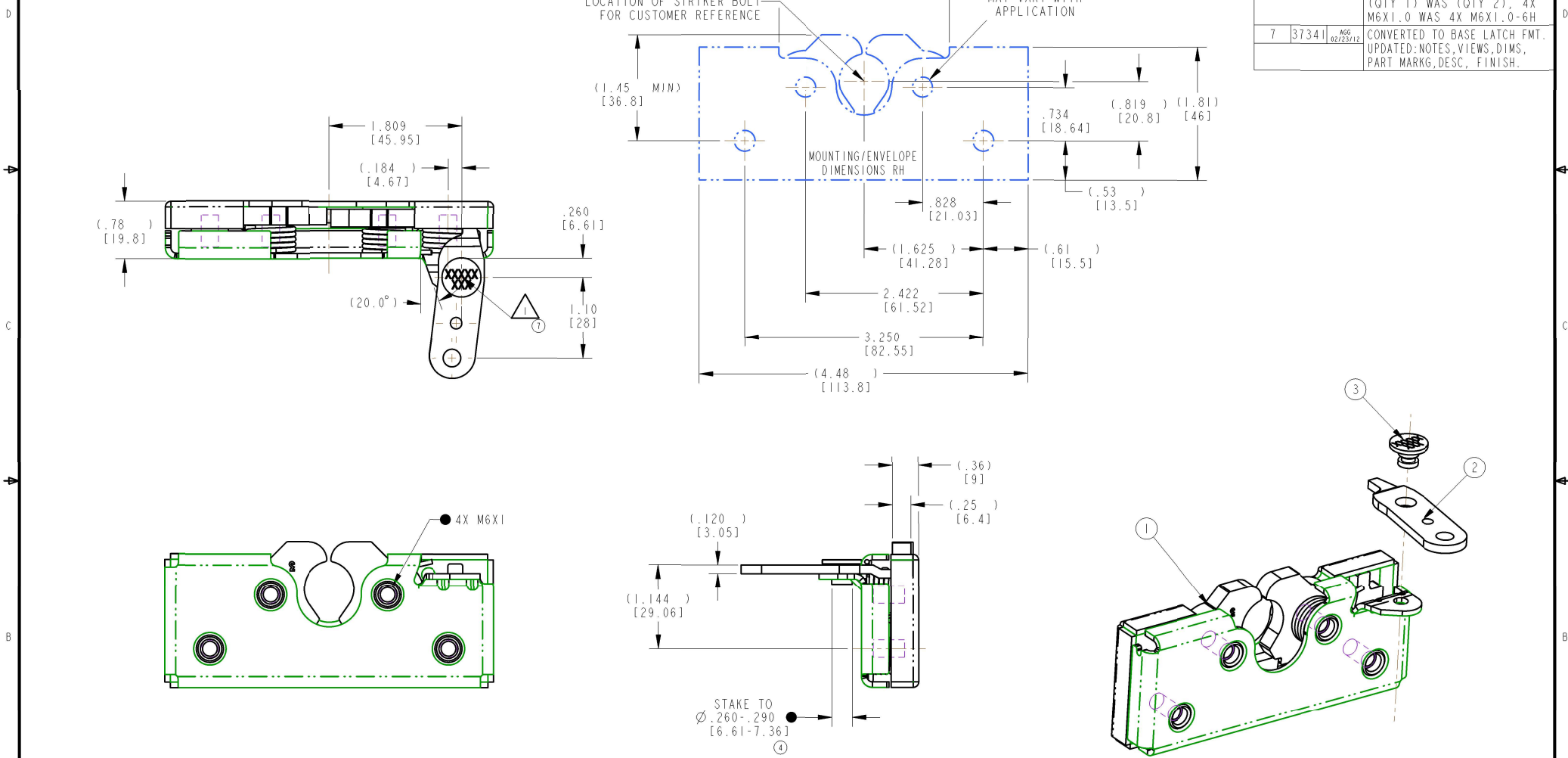


PART NUMBER	ITEM 1 BASE LATCH (QTY) ⑦	ITEM 2 LEVER (QTY)	ITEM 3 RIVET (QTY)	① PART MARKING
12093-6	0500100-31 (1)	11280-16 (1)	80635-16 (1)	12093

REVISION	ECN	ECN BY	DESCRIPTION
5	14219	TJN 01/28/00	REVISED NOTE 8, PROD CODE UPDATED DISPLAY
6	20193	BAR 07/27/05	ADDED 19428-01; UPDATED NOTES; BALLOON 3 WAS 4, BALLOON 4 WAS 3, 80854-00 (QTY 1) WAS (QTY 2), 4X M6X1.0 WAS 4X M6X1.0-6H
7	37341	AGG 02/23/12	CONVERTED TO BASE LATCH FMT. UPDATED: NOTES, DIMS, PART MARKG, DESC, FINISH.



- ①⑥
NOTES: UNLESS OTHERWISE SPECIFIED;
- ⑤①
IDENTIFY ASSEMBLIES WITH PART NUMBER AND DATE CODE, APPROXIMATELY AS SHOWN OR IN OTHER APPROVED LOCATIONS AS OUTLINED IN ES-121. ORIENTATION OF RIVET CONTAINING PART NUMBER AND DATE CODE NOT IMPORTANT.
- USE WITH TRIMARK'S Ø.675 [17.15] STRIKER BOLT.
 - WHEN MOUNTING LATCH, MOUNTING HOLE SIZE NOT TO EXCEED Ø.312 [7.92].
 - ASSEMBLY COMPLIES WITH STRENGTH REQUIREMENTS OF SAE STANDARD J839.
 - DIMENSIONS IN [] ARE MILLIMETERS FOR REFERENCE ONLY.
 - TIGHTEN CLASS 8.8 OR BETTER MOUNTING FASTENERS TO THE FASTENER MANUFACTURER'S RECOMMENDED TORQUE VALUE; HOWEVER, DO NOT EXCEED 120 IN-LB [13.6 Nm].

● INDICATES REQUIRED ASSEMBLY INFORMATION. UOS: THE -00 VERSION SHALL BE THE UNFINISHED VERSION OF PART SHOWN. UOS: ALL DIMENSIONS APPLY BEFORE COATING. (ASME Y14.5M-1994, sec. 2.4.1)		TriMark 500 Bailey Avenue P. O. Box 350 New Hampton, Iowa 50659 U.S.A. Tel: 641-394-3188 Fax: 641-394-2392	
TOLERANCES UNLESS OTHERWISE SPECIFIED (UOS) ASME Y14.5M-1994 HOLE SIZE: H9/D9 SHAFT SIZE: h9/d9 ANGLES: ±0.5° SURFACE FINISH: R0.8 DIMENSIONS: ±0.005		DRAWN BY: JGP 07/01/91 CHECKED BY: KER 07/03/91	PROJECT: 50-100-02 PRODUCT CODE: E01 (050-0100)
REF: T/M OF 4.20-2 FOR SUP. QUALITY REQ. REF: T/M OF 4.20-3 FOR INT. QUALITY REQ.		CUSTOMER PART NUMBER: 050-0100, RH, 2POS, M6X1, STR PART WEIGHT: (0.79 LB) SURFACE AREA:	SIZE: C SCALE: 1.0 PART NUMBER: 12093