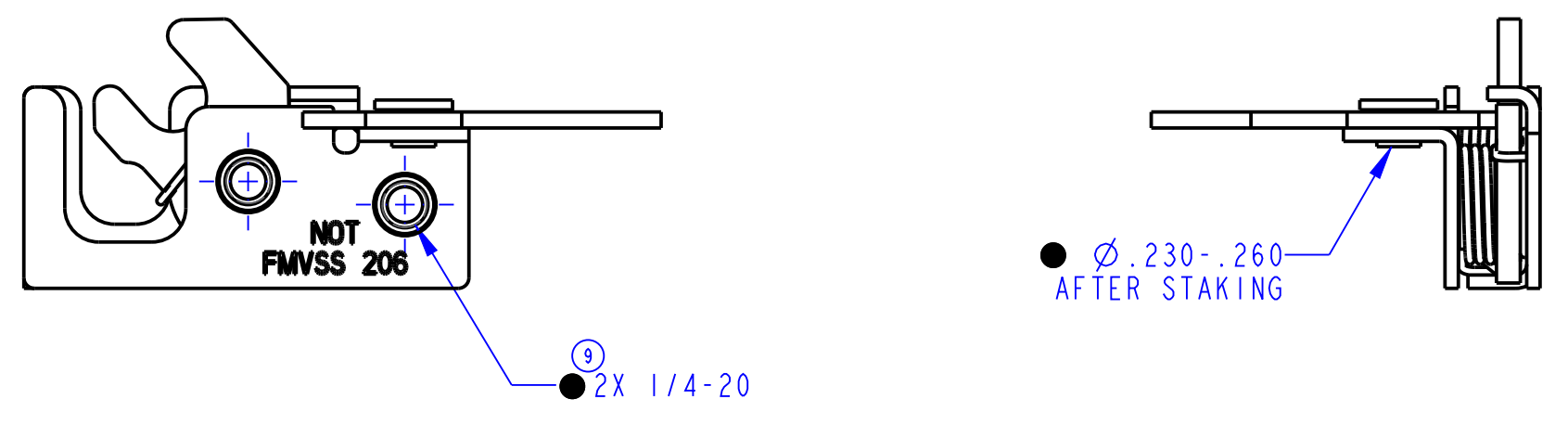
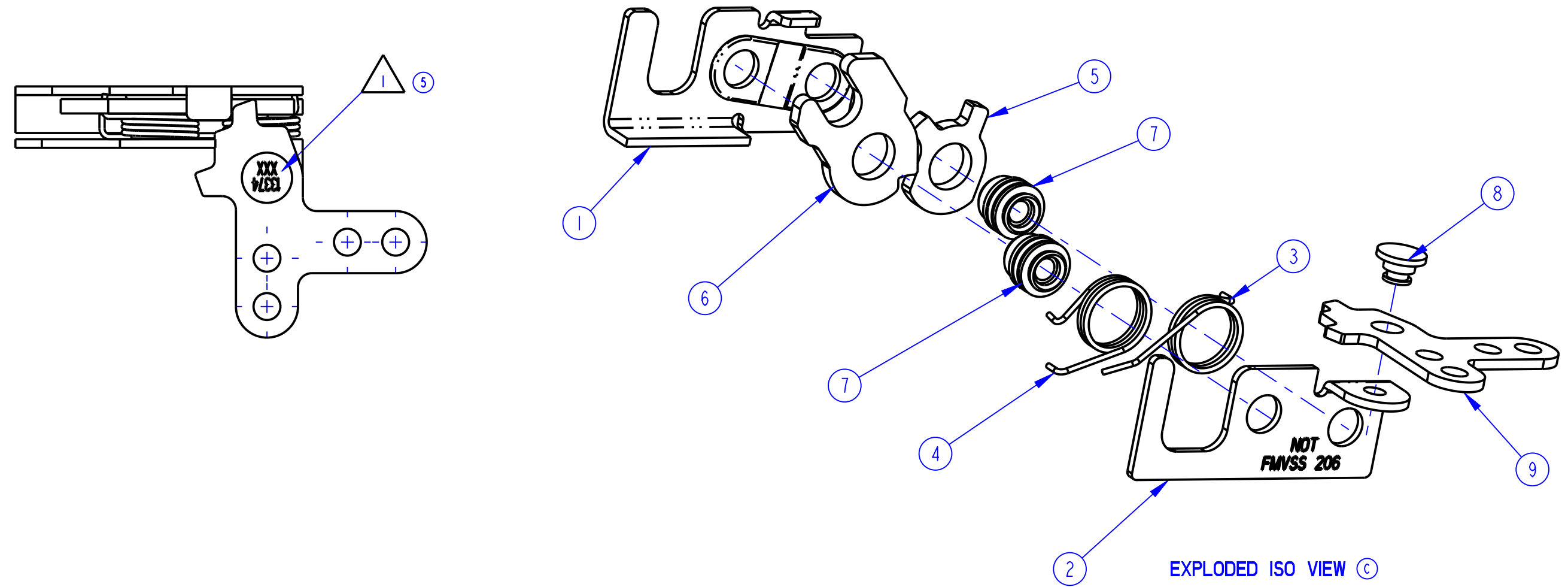


PART NUMBER DESCRIPTION	ITEM 1 PLATE (QTY)	ITEM 2 PLATE (QTY)	ITEM 3 SPRING (QTY)	ITEM 4 SPRING (QTY)	ITEM 5 CATCH (QTY)	ITEM 6 ROTOR (QTY)	ITEM 7 AXLE (QTY)	ITEM 8 RIVET (QTY)	ITEM 9 LEVER (QTY)
13374-01 050-0500, ASSY SGLRTR, MINI, RH	15822-01 (1)	13382-01 (1)	13381-01 (1)	13380-01 (1)	13376-01 (1)	13378-01 (1)	13377-01 (2)	80609-15 (1)	13384-01 (1)

REVISION	ECO	BY	CHECKED	DESCRIPTION
B	PRE-RLSE	BJB 10/4/95	DGI 10/5/95	REVISED ROTOR & CATCH SPRING POSITIONS
C	PRE-RLSE	KTT 11/9/95	DFT 11/9/95	UPDATED PART NAME; ADDED EXPLODED VIEW; DELETED VIEW, NOTE 2, 81504-00, 14330-01; 80609-15 WAS 13383-01
0	RLSE	JMK 2/8/96	DGI 2/13/96	RELEASED FOR PRODUCTION; ADDED PRODUCT CODE
1	9521	DA 7/26/96	KEC 7/26/96	ADDED NOTE 2 AND VIEW OF ROTOR CATCH (ITEM 5)
2	9904	CWL 4/2/97	KEC 4/2/97	ADDED -02 FINISH; REVISED NOTE 2
3	10077	DA 8/7/97	JMK 8/8/97	REVISED DISPLAY OF 13382-01
4	10459	DA 5/19/98	BJP 5/20/98	15822-01 WAS 13375-01
5	14219	TJN 02/17/00	JRS 02/17/00	REVISED NOTE 1, PROD CODE UPDATED DISPLAY
6	18723	MLH 02/22/01	BJE 02/22/01	ADDED NOTE 3
7	19397	TEB 8/14/02	MLH 8/14/02	REMOVED NOTE 2; REMOVED ROTOR CATCH VIEW
8	19893	MLH 4/20/04	GDE 4/20/04	DELETED VERSION -02; REVISED BOM
9	20193	BAR 8/12/05	MAD 8/12/05	15822-01 WAS 15882-01; ADDED NOTE 3, 2X 1/4-20 WAS 2X 1/4-20 UNC-2B



- NOTES:
- IDENTIFY ASSEMBLY WITH PART NUMBER AND DATE CODE APPROXIMATELY AS SHOWN, OR IN OTHER APPROVED LOCATIONS AS OUTLINED IN ES-121. ORIENTATION OF THE RIVET CONTAINING PART NUMBER AND DATE CODE NOT IMPORTANT.
  - AXLES TO WITHSTAND A MINIMUM OF 100 IN-LBS OF TORQUE.
  - TIGHTEN GRADE 5 OR BETTER MOUNTING FASTENERS TO THE FASTENER MANUFACTURER S RECOMMENDED TORQUE VALUE; HOWEVER, DO NOT EXCEED 120 IN-LB [13.6 Nm].

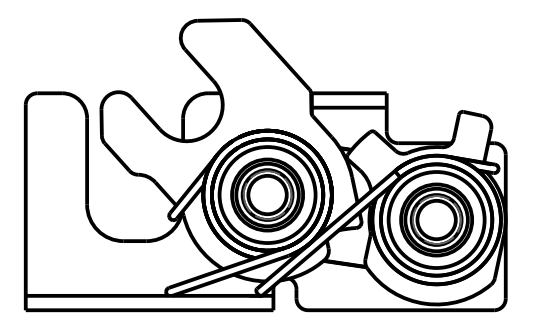


PLATE (ITEM 2), LEVER (ITEM 9) AND RIVET (ITEM 8) NOT SHOWN.

● INDICATES REQUIRED ASSEMBLY INFORMATION.

DRAWN BY	SJG	9/14/95	MATERIAL	<p>500 Bailey Avenue P. O. Box 350 New Hampton, Iowa 50659 U.S.A. Tel: 641-394-3188 Fax: 641-394-2392</p> <p>This drawing and the information contained herein is the property of TriMark Corporation and shall not be used for any purpose without our written consent.</p>
CHECKED BY			HEAT TREAT	
DESIGN ENG.	SJG	2/13/96	FINISH	
PROD. MNGR.			PROJECT	
TOLERANCES UNLESS OTHERWISE SPECIFIED ASME Y14.5M-1994 INCH MILLIMETER X.X ±.1 X ±.3 X.XX ±.03 X.X ±.8 X.XXX ±.010 X.XX ±.25 ANGLES X° ±.3° X.X° ±1.0° X.XX° ±.50°			CUSTOMER	CUSTOMER PART NUMBER
DO NOT SCALE DRAWING			SIZE	PRODUCT CODE
			PART WEIGHT	SCALE
			SURFACE AREA	REVISION
			PRODUCT CODE	TYPE
			REF. T/M OP 4.20-2 FOR SUP. QUALITY REQ. - REF. T/M OP 4.20-3 FOR INT. QUALITY REQ.	PART NUMBER
			94010	9
			(.2 LB)	13374-XX
			SEE BOM	
			95010	
			E31 (050-0500)	
			FULL	