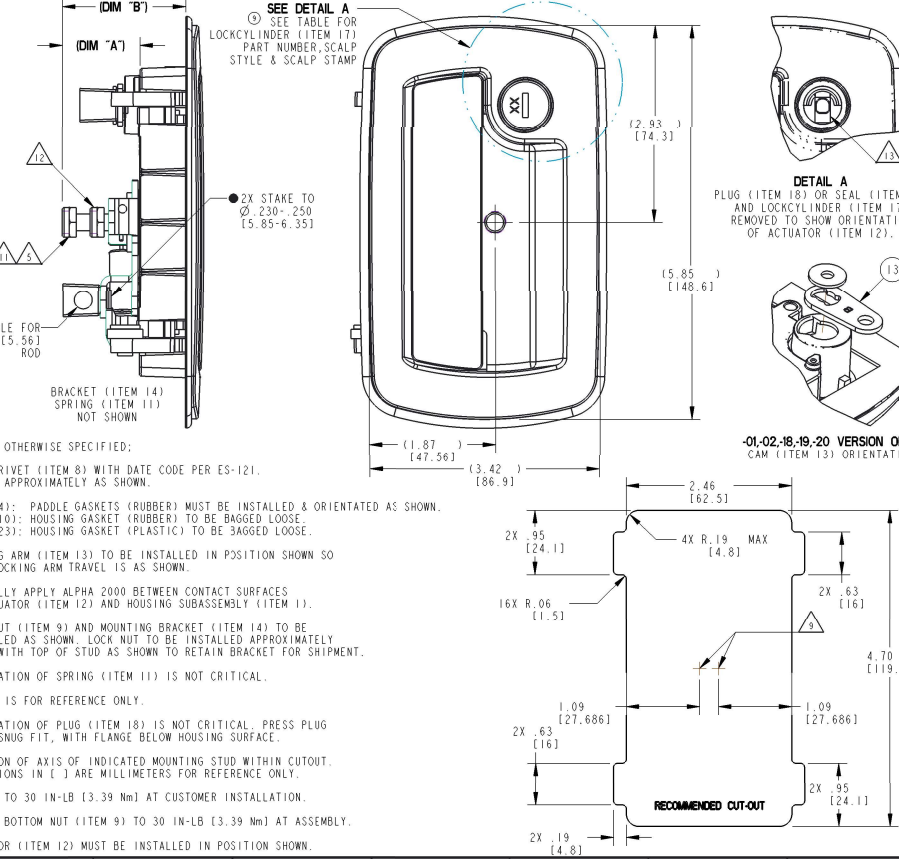
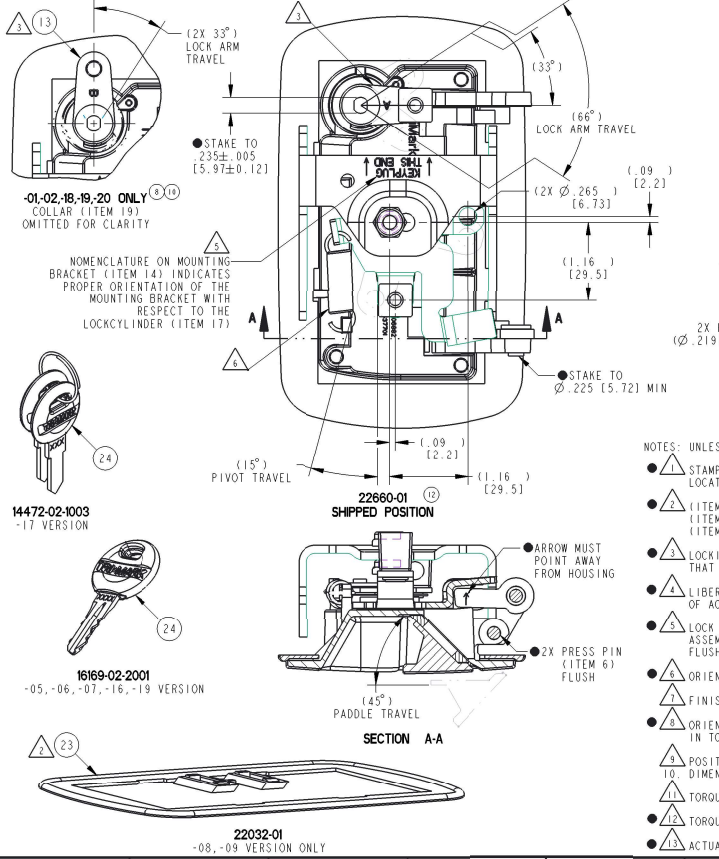
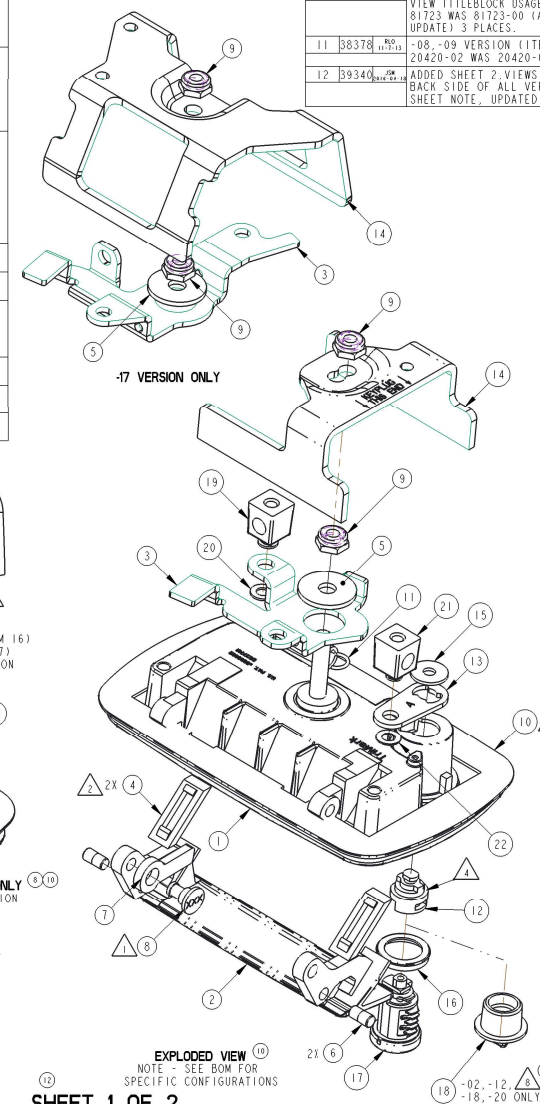


PART NUMBER DESCRIPTION	ITEM 1 SUBASSEMBLY (O17)	ITEM 2 PADDLE (O17)	ITEM 3 PLATE (O17)	ITEM 4 GASKET (O17)	ITEM 5 WASHER (O17)	ITEM 6 PIN (O17)	ITEM 7 ARM (O17)	ITEM 8 RIVET (O17)	ITEM 9 NUT (O17)	ITEM 10 GASKET (O17)	ITEM 11 SPRING (O17)	ITEM 12 ACTUATOR (O17)	ITEM 13 CAM (O17)	ITEM 14 BRACKET WASHER (O17)	ITEM 15 WASHER (O17)	ITEM 16 SEAL (O17)	ITEM 17 LOCKCYLINDER (O17)	ITEM 18 PLUG COLLAR (O17)	ITEM 19 WASHER (O17)	ITEM 20 WASHER (O17)	ITEM 21 COLLAR (O17)	ITEM 22 WASHER (O17)	ITEM 23 GASKET (O17)	ITEM 24 KEY (O17)	FINISH	DIM 'A'	DIM 'B'	KEYS SUPPLIED YES/NO (O17)	
22660-01 030-1400 LGB, RH, P.T. LGSTD, ZCLR										81723 (1)		17280-01 (1)				16025-01 (1)	16014-14-1000 (1)	N/A	12066-09 (1)	13152-01 (1)	12436-09 (1)	80510-15 (1)			N/A		1.15 (29.2)	1.86 (47.2)	YES (2)
22660-02 030-1400 LGB, KOP, RH, P.T. LGSTD, ZCLR		20498-02 (1)								81803-57 (1)						N/A	N/A	18298-01 (1)										N/A	
22660-03 030-1400 LGB/CNCC, RH, P.T. LGSTD		20498-01 (1)																											YES (2)
22660-04 030-1400 LGB, RH, P.T. LGSTD		20498-02 (1)		20420-01 (2)								20420-00 (1)																YES (2)	
22660-05 030-1400 LGB, RH, P.T. LGSTD, HDSHKT		20498-02 (1)																										YES (1)	
22660-06 030-1400 LGB/CNCC, RH, P.T. LGSTD		20498-01 (1)	81241-01 (1)																									YES (1)	
22660-07 030-1400 LGB, RH, P.T. LGSTD		20498-02 (1)																										YES (2)	
22660-08 030-1400 LGB, RH, P.T. LGSTD, HDSHKT		20498-02 (1)																										YES (2)	
22660-09 030-1400 LGB, RH, P.T. LGSTD, Z CLR, HDSHKT		20498-02 (1)																										YES (2)	
22660-10 030-1400 LGB, KOP, RH, P.T. LGSTD		20498-01 (1)																										N/A	
22660-11 030-1400 CNCC, RH, P.T. LGSTD		20498-01 (1)																										N/A	
22660-12 030-1400 CNCC, RH, P.T. LGSTD		20498-02 (1)																										NO	
22660-13 030-1400 LGB, RH, P.T. LGSTD		20498-02 (1)																										YES (2)	
22660-14 030-1400 LGB, RH, P.T. LGSTD, Z CLR		20498-01 (1)																										YES (2)	
22660-15 030-1400 LGB, RH, P.T. LGSTD, Z CLR		20498-01 (1)																										YES (1)	
22660-16 030-1400 LGB, RH, P.T. LGSTD, Z CLR		20498-01 (1)																										N/A	

REVISION	ECN	EN BY	DESCRIPTION
8	30564	5/20/13	ADDED -18 VERSION, UPDATED VIEWS.
9	37373	5/20/13	-07, -16 (ITEM 17); 31684-01 WAS 16014-02-2001. UPDATED. "SEE DETAIL A" DESCRIPTION.
10	38269	5/20/13	ADDED -20 VERSION, UPDATED VIEW TITILELOCK USAGE BOM; 81723 WAS 81723-00 (AS400 UPDATED) 3 PLACES.
11	38378	5/20/13	-08, -09 VERSION (ITEM 4); 20420-02 WAS 20420-01.
12	39340	5/20/13	ADDED SHEET 2, VIEWS OF EACH SIDE OF ALL VERSIONS SHEET NOTE, UPDATED NOTE

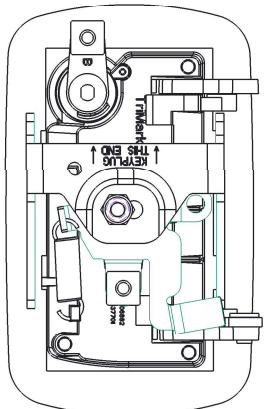


- NOTES: UNLESS OTHERWISE SPECIFIED:
- $\triangle$  STAMP RIVET (ITEM 8) WITH DATE CODE PER ES-121. LOCATE APPROXIMATELY AS SHOWN.
  - $\triangle$  (ITEM 4): PADDLE GASKETS (RUBBER) MUST BE INSTALLED & ORIENTATED AS SHOWN.
  - $\triangle$  (ITEM 10): HOUSING GASKET (RUBBER) TO BE BAGGED LOOSE.
  - $\triangle$  (ITEM 23): HOUSING GASKET (PLASTIC) TO BE BAGGED LOOSE.
  - $\triangle$  LOCKING ARM (ITEM 13) TO BE INSTALLED IN POSITION SHOWN SO THAT LOCKING ARM TRAVEL IS AS SHOWN.
  - $\triangle$  LIBERALLY APPLY ALPHA 2000 BETWEEN CONTACT SURFACES OF ACTUATOR (ITEM 12) AND HOUSING SUBASSEMBLY (ITEM 1).
  - $\triangle$  LOCK NUT (ITEM 9) AND MOUNTING BRACKET (ITEM 14) TO BE ASSEMBLED AS SHOWN. LOCK NUT TO BE INSTALLED APPROXIMATELY FLUSH WITH TOP OF STUD AS SHOWN TO RETAIN BRACKET FOR SHIPMENT.
  - $\triangle$  ORIENTATION OF SPRING (ITEM 11) IS NOT CRITICAL.
  - $\triangle$  FINISH IS FOR REFERENCE ONLY.
  - $\triangle$  ORIENTATION OF PLUG (ITEM 18) IS NOT CRITICAL. PRESS PLUG IN TO SNUG-FIT, WITH FLANGE BELOW HOUSING SURFACE.
  - $\triangle$  POSITION OF AXIS OF INDICATED MOUNTING STUD WITHIN CUTOUT. 10. DIMENSIONS IN ( ) ARE MILLIMETERS FOR REFERENCE ONLY.
  - $\triangle$  TORQUE TO 30 IN-LB [3.39 Nm] AT CUSTOMER INSTALLATION.
  - $\triangle$  TORQUE BOTTOM NUT (ITEM 9) TO 30 IN-LB [3.39 Nm] AT ASSEMBLY.
  - $\triangle$  ACTUATOR (ITEM 12) MUST BE INSTALLED IN POSITION SHOWN.

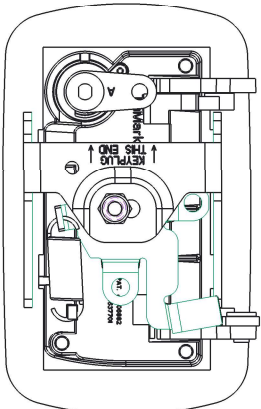
EXPLODED VIEW  
NOTE - SEE BOM FOR SPECIFIC CONFIGURATIONS

SHEET 1 OF 2

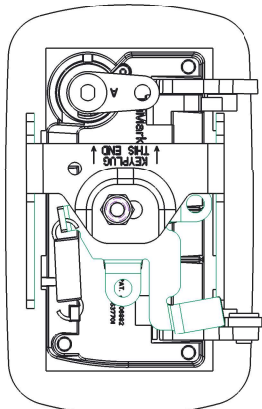
UNLESS OTHERWISE SPECIFIED: DIMENSIONS IN MILLIMETERS TOLERANCES: X.X ±0.1, X.XX ±0.05, X.XXX ±0.025 FINISHES: RA 1.6, RA 0.8, RA 0.4 HOLE DRILLING: DRILL BIT DIMENSIONS IN ( ) ARE MILLIMETERS FOR REFERENCE ONLY.		DRAWN BY MLH CHECKED BY KPE PROJECT 03087 PRODUCT CODE C30 (030-1400)	DATE 7/6/06 7/6/06 PRODUCT CODE C30 (030-1400)	 500 Bailey Avenue New Hampton, Iowa 50659 U.S.A. Tel: 563-398-3700 Fax: 563-398-2392 This drawing and the information contained herein is the property of TriMark Corporation and shall not be used for any purpose without our written consent.
DO NOT SCALE DRAWING REF: 1/8 OF 4 1/8" FOR SHIP QUALITY REQ. REF: 1/8 OF 4 1/8" FOR SHIP QUALITY REQ.		CUSTOMER PART NUMBER (1.5 LB) PART WEIGHT SURFACE AREA SIZE D SCALE 1:0 PART NUMBER 22660	SEE TABLE DESCRIPTION	



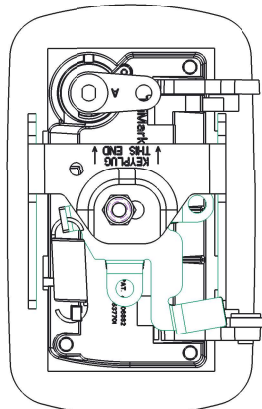
22660-02



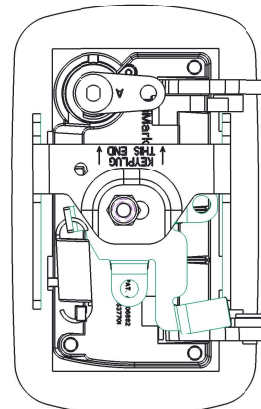
22660-03



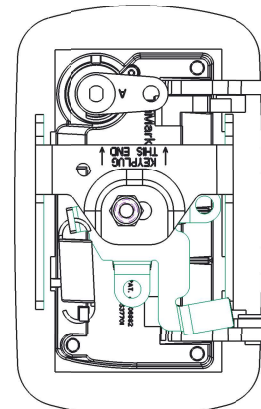
22660-04



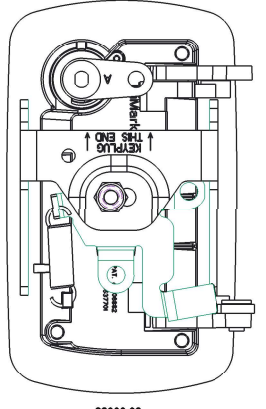
22660-05



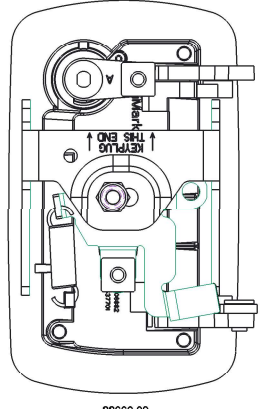
22660-06



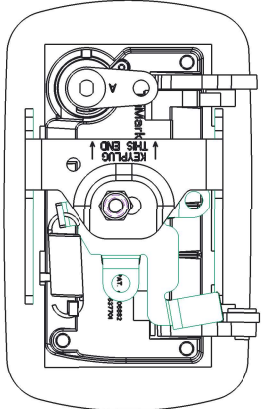
22660-07



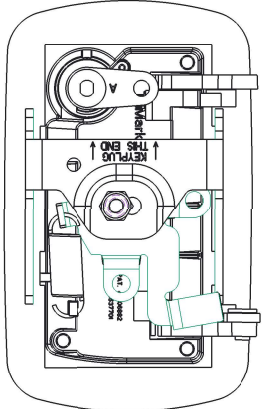
22660-08



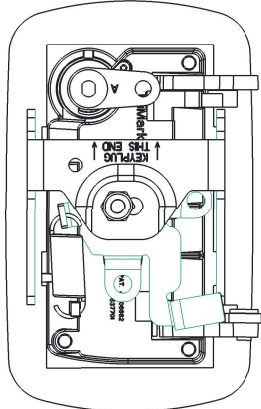
22660-09



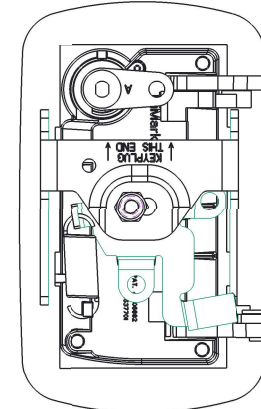
22660-10



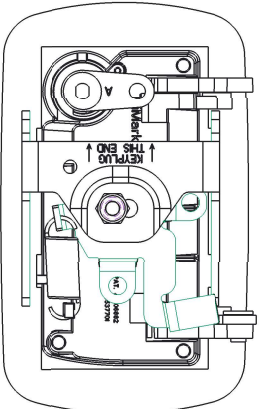
22660-11



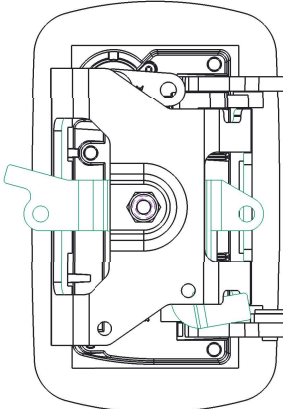
22660-12



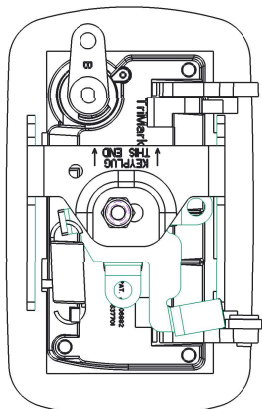
22660-13



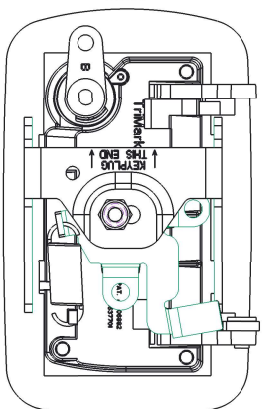
22660-16



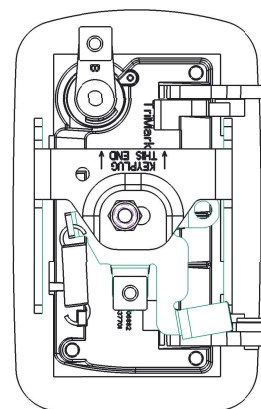
22660-17



22660-18



22660-19



22660-20

12 SHEET 2 OF 2

SHEET	SIZE	SCALE	PART NUMBER
2/2	D	1.0	22660
			REVISION
			12