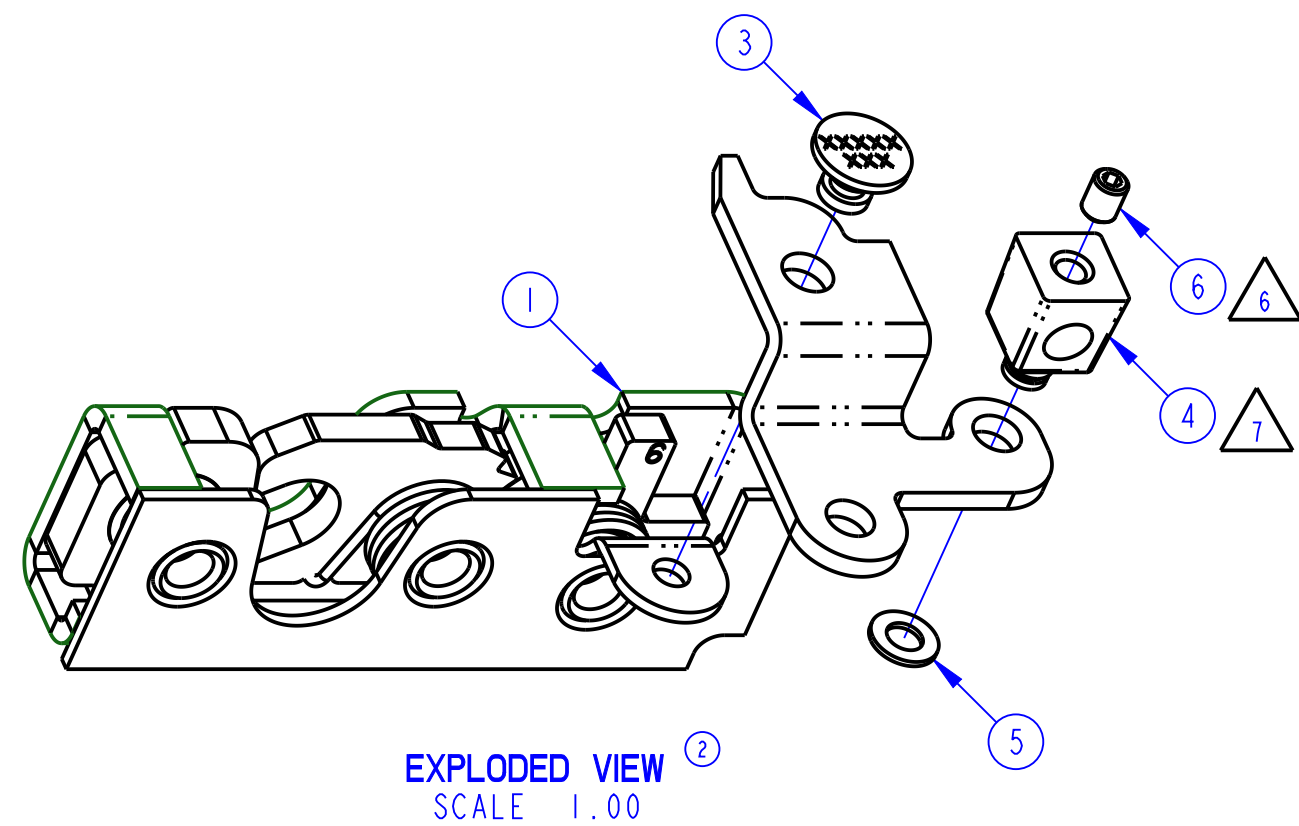
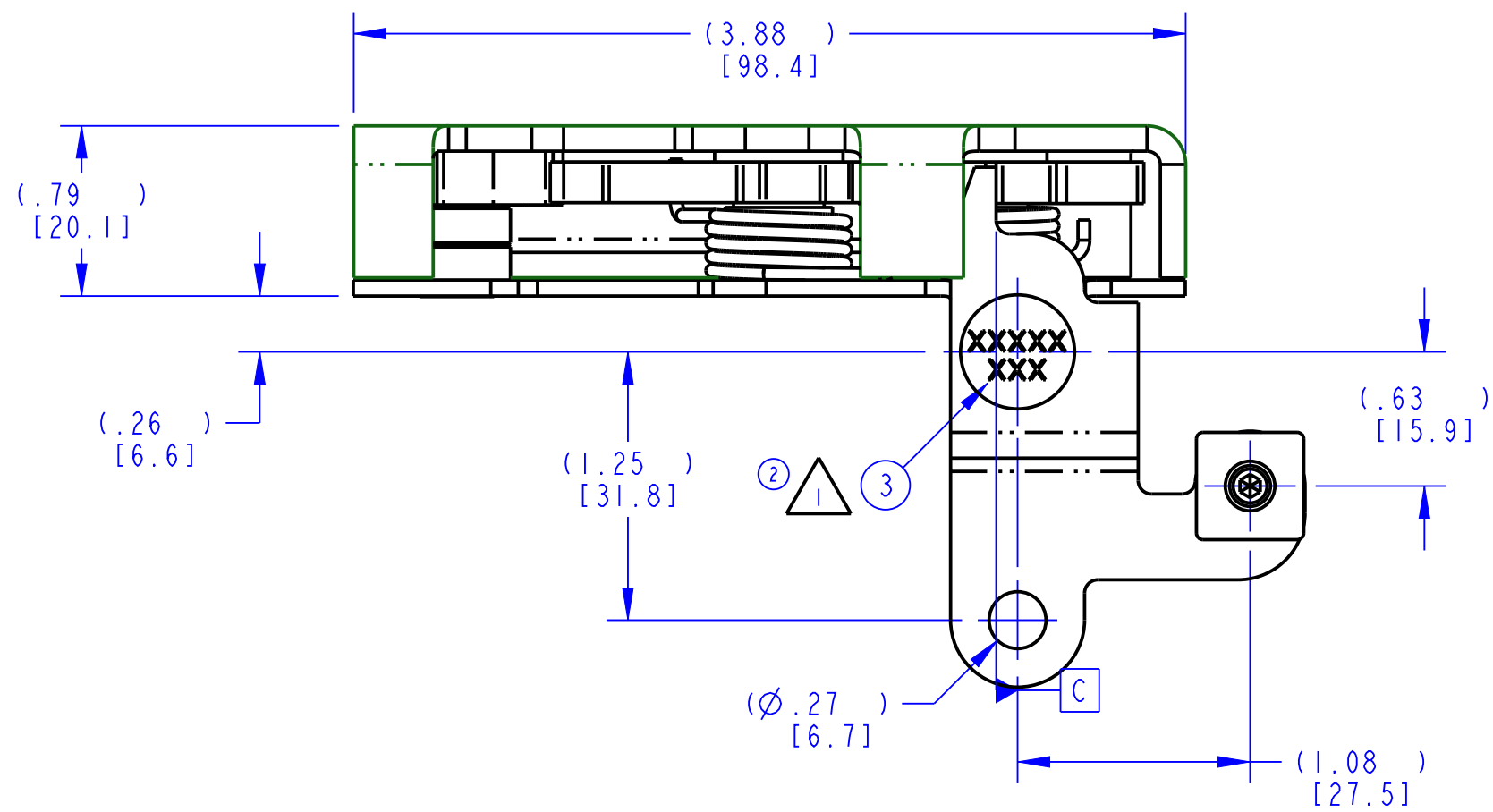
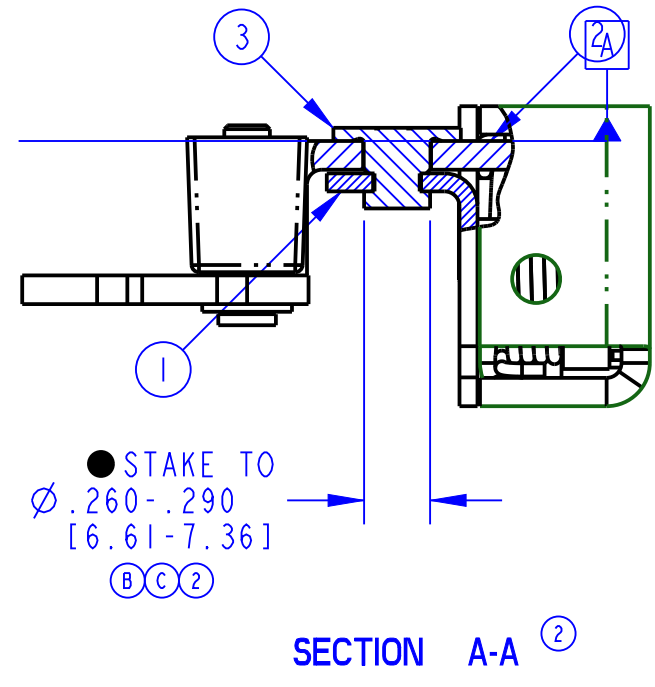
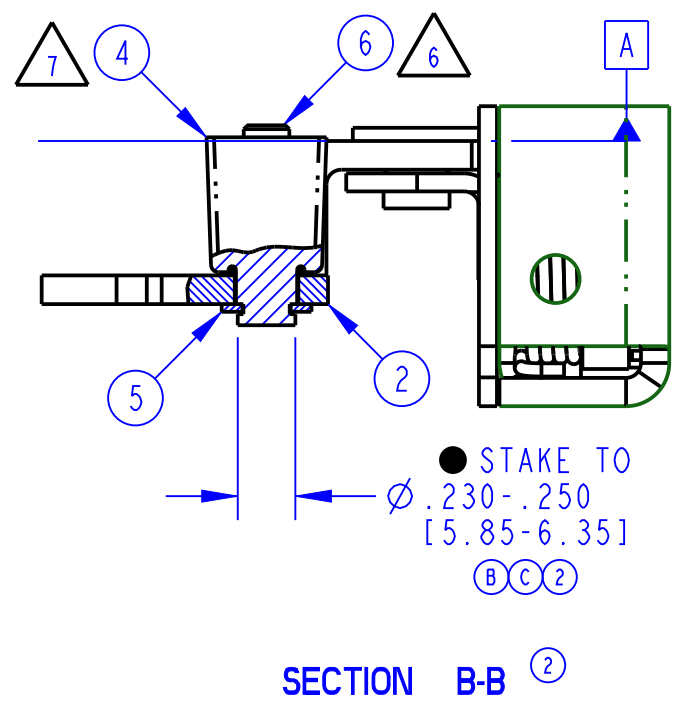
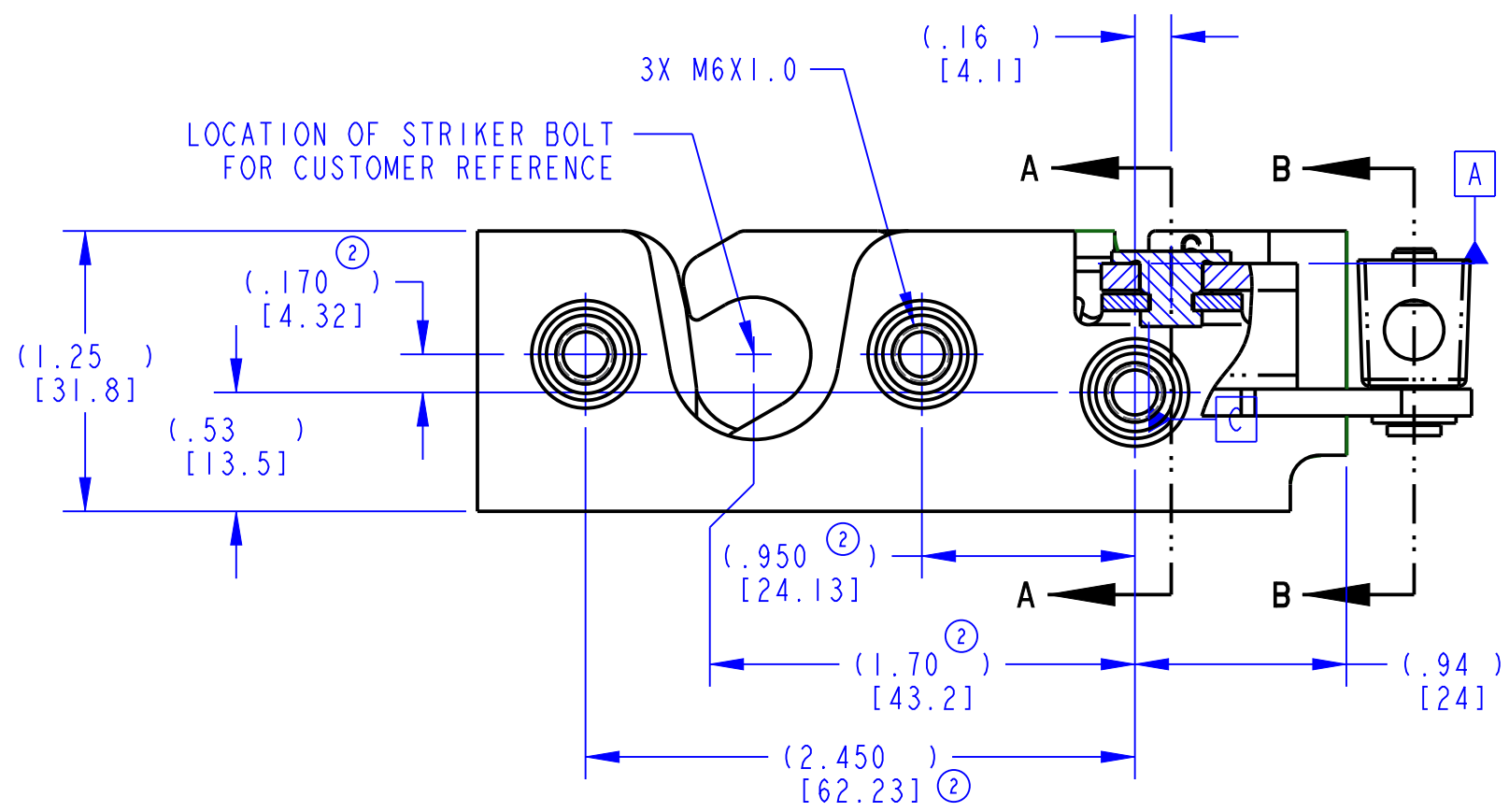


| PART NUMBER | ITEM 1<br>BASE LATCH<br>(QTY) | ITEM 2<br>LEVER<br>(QTY) | ITEM 3<br>RIVET<br>(QTY) | ITEM 4<br>COLLAR<br>(QTY) | ITEM 5<br>WASHER<br>(QTY) | ITEM 6<br>SETSCREW<br>(QTY) | PART MARKING |
|-------------|-------------------------------|--------------------------|--------------------------|---------------------------|---------------------------|-----------------------------|--------------|
| 24624-01    | 0500200-33<br>(1)             | 12583-01<br>(1)          | 80635-16<br>(1)          | 12504-09<br>(1)           | 13152-01<br>(1)           | 81574-00<br>(1)             | △ 1 ②        |



| REVISION | ECN      | ECN BY       | DESCRIPTION                                                                                                                                                                                                                                                                        |
|----------|----------|--------------|------------------------------------------------------------------------------------------------------------------------------------------------------------------------------------------------------------------------------------------------------------------------------------|
| A        | PRE-RLSE | IC 28/09/07  | CREATED                                                                                                                                                                                                                                                                            |
| B        | PRE-RLSE | AEP 10/19/07 | NEW FORMAT, ADDED: ASSEMBLY DOTS, ENVELOPE DIMS, 12583-01 WAS 81185-16, 12504-09 WAS 12504-01,                                                                                                                                                                                     |
| C        | PRE-RLSE | AEP 10/29/07 | DELETED: METRIC STICKER, .230-.290 WAS 5.8-6.6, .260-.290 WAS 6.6-7.3                                                                                                                                                                                                              |
| 1        | RLSE     | AEP 10/30/07 | DELETED NOTE 3, ADDED NOTE 7, RELEASED FOR PRODUCTION                                                                                                                                                                                                                              |
| 2        | 39161    | RLO 11-24-15 | BOM (ITEM 1): 0500200-33 WAS 0500200-17. UPDATED DRAWING FORMAT, PART MARK, DESCRIPTION, NOTE 3, VIEWS, PART WEIGHT (LB WAS KG), DIMENSIONS; (.170) WAS (.17), (.950) WAS (.95) & (2.450) WAS (2.45). ADDED PART MARKING COLUMN, NOTES 8 & 9, VIEWS. REMOVED -XX FROM PART NUMBER. |



NOTE: VIEW BROKEN TO SHOW RIVET LOCATION

- NOTES: UNLESS OTHERWISE SPECIFIED;
- △ 1 IDENTIFY ASSEMBLY WITH PART NUMBER AND DATE CODE APPROXIMATELY AS SHOWN, OR IN OTHER APPROVED LOCATIONS AS OUTLINED IN ES-121. ORIENTATION OF THE RIVET CONTAINING PART NUMBER AND DATE CODE NOT IMPORTANT.
  - 2. ASSEMBLY COMPLIES WITH STRENGTH REQUIREMENTS OF SAE J839.
  - ② 3. TIGHTEN CLASS 8.8 OR BETTER MOUNTING FASTENERS TO THE FASTENER MANUFACTURER'S RECOMMENDED TORQUE VALUE; HOWEVER, DO NOT EXCEED 120 IN-LB [13.6Nm] TO COMPLY WITH FMVSS206 AND EC-11 STRENGTH REQUIREMENTS. THE THREADED END OF THE FASTENER MUST PASS COMPLETELY THROUGH THE AXLE AND BEYOND THE OUTSIDE SURFACE OF THE LATCH.
  - 4. WHEN MOUNTING LATCH; MOUNTING HOLE SIZE NOT TO EXCEED ∅.312 [7.92]
  - 5. DIMENSIONS IN [ ] ARE MILLIMETERS FOR REFERENCE ONLY.
  - △ 6 SETSCREW (ITEM 6) TO BE SHIPPED INSTALLED INTO COLLAR (ITEM 4) BY THREE TO FOUR THREADS.
  - △ 7 AFTER STAKING; COLLAR (ITEM 4) MUST SPIN FREELY.
  - ② 8. USE WITH TRIMARK'S ∅0.500 [12.70MM] STRIKER BOLT.
  - ② 9. OPPOSITE HAND ASSEMBLY IS 24623-01.

|                                                                                                                                                                                                                                    |                                                                                                                                                                         |
|------------------------------------------------------------------------------------------------------------------------------------------------------------------------------------------------------------------------------------|-------------------------------------------------------------------------------------------------------------------------------------------------------------------------|
| ● INDICATES REQUIRED ASSEMBLY INFORMATION.<br>② UOS: THE -00 VERSION SHALL BE THE UNFINISHED VERSION OF PART SHOWN.<br>UOS: ALL DIMENSIONS APPLY BEFORE COATING. (ASME Y14.5M, sec. 2.4.1)                                         |                                                                                                                                                                         |
| <b>TOLERANCES UNLESS OTHERWISE SPECIFIED (UOS)</b><br>ASME Y14.5M-1994<br>INCH MILLIMETER<br>X.X = ±.1 X = ±.3<br>X.XX = ±.03 X.X = ±.8<br>X.XXX = ±.010 X.XX = ±.25<br><b>ANGLES</b><br>X° = ±3°<br>X.X° = ±1.0°<br>X.XX° = ±.50° | DRAWN BY IC 09/28/07<br>CHECKED BY GCL 11/05/07<br>PROJECT XZK101 PRODUCT CODE E16 (050-0200)<br>CUSTOMER<br>CUSTOMER PART NUMBER<br>PART WEIGHT (0.65 LB) SURFACE AREA |
| DO NOT SCALE DRAWING<br>REF. T/M OP 4.20-2 FOR SUP. QUALITY REQ.<br>REF. T/M OP 4.20-3 FOR INT. QUALITY REQ.                                                                                                                       | SIZE C SCALE ② PART NUMBER ②<br>1.25 24624                                                                                                                              |

**TriMark**  
 500 Bailey Avenue  
 P. O. Box 350  
 New Hampton, Iowa 50659 U.S.A.  
 Tel: 641-394-3188  
 Fax: 641-394-2392

This drawing and the information contained herein is the property of TriMark Corporation and shall not be used for any purpose without our written consent.

DESCRIPTION ②  
 050-0200, RH, 2POSN, M6X1.0, 2PT, L  
 PART NUMBER ②  
 24624