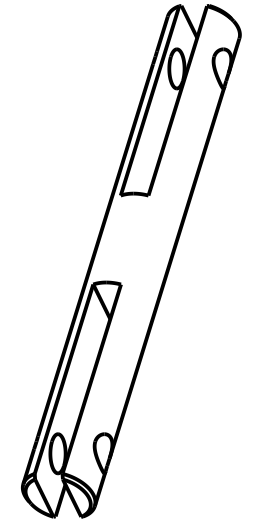
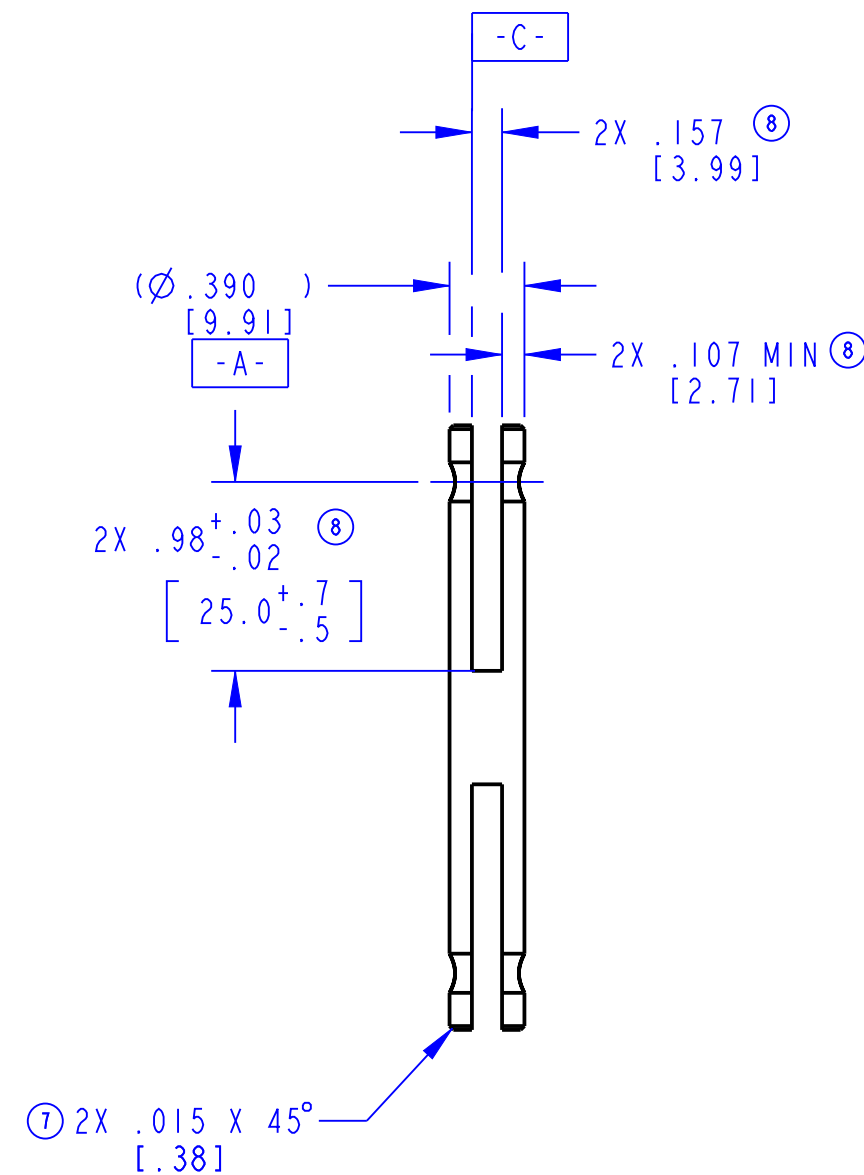
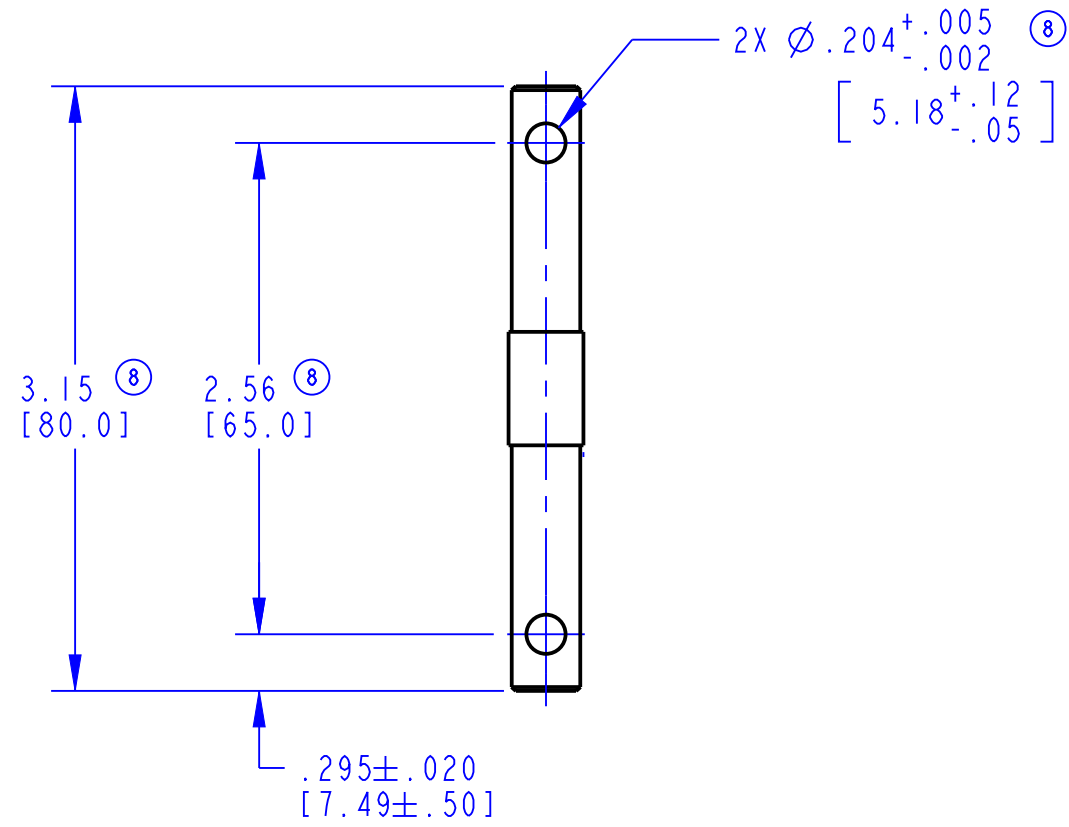
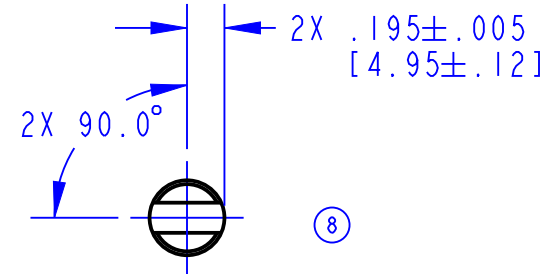


PART NUMBER	MATERIAL	FINISH
80839-16	⑦ 12L14 CDS	⑧ COAT, CLEAR PER ES-104

REVISION	ECN	ECN BY	DESCRIPTION
6	9315	JMK 4/26/96	RMVD -16-BX VERSION; UPDATED PART NAME; REDRAWN ON CAD; UPDATED TOLERANCES
7	15205	BJB 03/07/00	2X .015 X 45° WAS 2X .010-.030 X 45°; REMOVED VIEW, RADIUS CALLOUT AND MATERIAL DIMENSION; ADD ISO VIEW; UPDATE PRODUCT CODE
8	38891	SJL 02/12/15	USE STANDARD TOLERANCE BLOCK, FINISH UPDATED, PART NAME UPDATED, ONE VIEW ADDED, .98 +.03/- .02 WAS .984 +/- .020, .157 +/- .010 WAS +.010/- .005, .107 MIN WAS .117, 3.15 WAS 3.149, 2.56 WAS 2.559,



⑦ ISO VIEW

NOTES: UNLESS OTHERWISE SPECIFIED:  
 1. DIMENSIONS ARE RELATED TO DATUM A (PRIMARY), DATUM B (SECONDARY), AND DATUM C (TERTIARY).  
 2. TOLERANCES FOR CAD MODEL DIMENSIONS THAT ARE NOT SPECIFIED ON THE DRAWING ARE: ± 0.030 [0.8] AND ± 3°  
 3. DIMENSIONS IN [ ] ARE IN MILLIMETERS.

Prod Status: <b>PRODUCTION</b>	Control Status: <b>TRIMARK CONTROL</b>	Group: <b>CORP TECH</b>
<p>● INDICATES REQUIRED ASSEMBLY INFORMATION.          UOS: THE -00 VERSION SHALL BE THE UNFINISHED VERSION OF PART SHOWN.          UOS: ALL DIMENSIONS APPLY BEFORE COATING. (ASME Y14.5M, sec. 2.4.1)</p>		
<b>TOLERANCES UNLESS OTHERWISE SPECIFIED (UOS)</b> ASME Y14.5M-1994 INCH MILLIMETER X.X = ±.1 X = ±3 X.XX = ±.03 X.X = ±.8 X.XXX = ±.010 X.XX = ±.25 ANGLES X° = ±3° X.X° = ±1.0° X.XX° = ±.50°	DRAWN BY <b>JRW</b> 11/24/82 CHECKED BY <b>BAB</b> 01/04/84	 500 Bailey Avenue P. O. Box 350 New Hampton, Iowa 50659 U.S.A. Tel: 641-394-3188 Fax: 641-394-2392
	PROJECT <b>LX82028-101</b> PRODUCT CODE <b>J03 (090-0110)</b>	
REF. T/M OP 4.20-2 FOR SUP. QUALITY REQ. REF. T/M OP 4.20-3 FOR INT. QUALITY REQ.	PART WEIGHT <b>(0.06LBS)</b> SURFACE AREA <b>(5.07IN<sup>2</sup>)</b>	DESCRIPTION <b>ROD, .390X3.15, 2PTS</b> ⑧ SIZE <b>C</b> SCALE <b>1.0</b> PART NUMBER <b>80839</b>